



TRANSPORTATION CABINET

Frankfort, Kentucky 40622
www.transportation.ky.gov/

Steven L. Beshear
Governor

Michael W. Hancock, P.E.
Secretary

January 17, 2012

CALL NO. 102
CONTRACT ID NO. 121001
ADDENDUM # 2

Subject: Pike County, APD 0806 (040)
Letting January 27, 2012

- (1) Revised - Plan Sheets - T1, T56, T57, & T58
- (2) Revised - Bid Items - Pages 84-88 of 88

Proposal revisions are available at <http://transportation.ky.gov/contract/>.
Plan revisions are available at <http://www.lynnimaging.com/kytransportation/>.

If you have any questions, please contact us at 502-564-3500.

Sincerely,

A handwritten signature in blue ink that reads "Ryan Griffith".

Ryan Griffith
Director
Division of Construction Procurement

RG:ks
Enclosures



An Equal Opportunity Employer M/F/D

SIGNING

COUNTY OF	ITEM NO.	SHEET NO.
PIKE	12-263.49	T001

ESTIMATE OF QUANTITIES

NOTES :

- (1) PAYMENT FOR GROUND MOUNTED SIGN SUPPORTS TYPE A AND TYPE C SHALL BE BASED ON THE NOMINAL WEIGHT OF THE BEAMS. THE NECESSARY GALVANIZING, HARDWARE, ETC. IS TO BE CONSIDERED INCIDENTAL. QUANTITIES FOR TYPE C SUPPORTS SHALL INCLUDE ALL NECESSARY HARDWARE TO FORM COMPLETE BREAK-AWAY BEAMS. SEE PANEL SIGN DETAIL SHEET.
- (2) QUANTITY SHALL INCLUDE ALL COPY AND HARDWARE NECESSARY TO FORM COMPLETE SIGNS. NO DEDUCTION IN AREA IS TO BE MADE FOR ROUNDING OF CORNERS.
- (3) WITH PERMISSION OF THE ENGINEER, SHEETING SIGNS ON THE RAMPS AND SIDE ROADS MAY BE MOVED TO BE COMPATIBLE WITH THE EXISTING SIGNS.
- (4) QUANTITY IS ESTIMATED. THE EXACT LENGTH SHALL BE DETERMINED BY THE CONTRACTOR AND APPROVED BY THE ENGINEER.
- (5) WHERE REQUIRED, BRACING FOR SHEETING SIGNS SHALL BE INCIDENTAL TO STEEL POST. SEE SHEETING SIGN DETAIL SHEET.
- (6) QUANTITY SHALL INCLUDE ALL MATERIAL NECESSARY TO FORM A COMPLETE BREAK-AWAY ASSEMBLY. TYPE I POSTS AND CONCRETE SHALL BE PAID SEPARATELY. SEE SHEETING SIGN DETAIL SHEET.
- (7) QUANTITY SHALL INCLUDE SIGN AND POST.
- (8) ALL MATERIALS REMOVED AND NOT REUSED, SUCH AS SIGNS, SIGN LIGHTS, SIGN SUPPORTS, ETC. SHALL BECOME THE PROPERTY OF THE CONTRACTOR.
- (9) THE REMOVAL OF ALL TYPE I OR II POSTS AND ALL SHEETING SIGNS SHALL BE INCIDENTAL TO THE PROJECT WITH NO ADDITIONAL PAYMENT BEING ALLOWED. ALL MATERIAL SHALL BE STORED IN ACCORDANCE WITH NOTE (8) ABOVE.
- (10) WHERE THE REMOVAL OF OVERHEAD STRUCTURE CONCRETE BASE IS CALLED FOR, THE BASE IS TO BE REMOVED TO A MINIMUM OF ONE FOOT (1') BELOW THE GROUND LINE, BACKFILLED TO EXISTING GROUND LINE, AND THE DISTURBED AREAS RESEDED.
- (11) WHERE THE REMOVAL OF BEAM SIGN SUPPORTS IS CALLED FOR, THE BEAM AND ANY CONCRETE PROJECTING ABOVE THE GROUND LINE ARE TO BE CUT OFF A MINIMUM OF ONE FOOT (1') BELOW EXISTING GROUND LINE OR THE ENTIRE BEAM AND CONCRETE BASE ARE TO BE REMOVED COMPLETELY AND BACKFILLED TO EXISTING GROUND LINE.
- (12) QUANTITY SHALL INCLUDE W-BARS AND ALL HARDWARE NECESSARY FOR ATTACHING SIGNS TO SUPPORTS.
- (13) QUANTITY IS ESTIMATED. THE EXACT NUMBER SHALL BE DETERMINED BY THE CONTRACTOR AND APPROVED BY THE ENGINEER. SEE SIGNING POSITIONING DETAIL SHEET FOR DELINEATOR PLACEMENT.
- (14) FOOTER AND FOUNDATION ALREADY CONSTRUCTED FOR TRUSS LOCATED AT STATION 1+160

ITEM	CODE NUMBER	UNIT	QUANTITY				TOTALS
GROUND MOUNTED SIGN SUPPORTS							
⊕ TYPE A	6400	LBS.					22,407
⊕ TYPE C	6441	LBS.					8,619
FOOTINGS FOR SIGNS							
CONCRETE - CLASS "A" FOR SIGNS	6490	CU.YD.					133.1
REINFORCEMENT STEEL	6491	LBS.					5911
SIGN BASE MATERIAL							
ALUMINUM							
② PANEL SIGNS	6405	SQ.FT.					4516.1
③ SHEETING SIGNS							
0.080 GAUGE	6406	SQ.FT.					1273.3
0.125 GAUGE	6407	SQ.FT.					1016.5
STEEL POST ④⑤							
TYPE 1	6410	LN.FT.					1457
TYPE 2	6411	LN.FT.					4495
⑥ TYPE D	21596ND	EACH					19
⑦ MILE MARKERS	6412	EACH					
REFERENCE MARKERS	4903	EACH					
DELINEATORS							
WHITE	6413	EACH					
AMBER	6414	EACH					
REMOVAL ITEMS ⑧⑨							
REMOVE OVERHEAD SIGN SUPPORT STRUCTURE	6449	EACH					
⑩ REMOVE OVERHEAD SIGN SUPPORT STRUCTURE CONCRETE BASE	6450	EACH					
⑪ REMOVE SIGN SUPPORT BEAMS	6451	EACH					
REMOVE SIGN	21373ND	EACH					
MOVE CANTILEVER SIGN SUPPORT	20995ND	EACH					
REMOVE AND RELOCATE SIGN	20418ED	EACH					
STEEL "W" BEAM GUARDRAIL							
SINGLE FACE	2351	LN.FT.					
DOUBLE FACE	2352	LN.FT.					
END TREATMENT TYPE 1	2367	EACH					
END TREATMENT TYPE 2A	2369	EACH					

ITEM	CODE NUMBER	UNIT	QUANTITY				TOTALS
OVERHEAD SIGN SUPPORTS ⑫							
OSS ALUMINUM 60 FT TRUSS	6422	EACH					2
OSS ALUMINUM 65 FT TRUSS	6424	EACH					
OSS ALUMINUM 70 FT TRUSS	6426	EACH					1 (14)
OSS ALUMINUM 75 FT TRUSS	6436	EACH					
OSS ALUMINUM 80 FT TRUSS	6438	EACH					
OSS ALUMINUM 85 FT TRUSS	6443	EACH					
OSS ALUMINUM 90 FT TRUSS	6445	EACH					
OSS ALUMINUM 95 FT TRUSS	6453	EACH					
OSS ALUMINUM 100 FT TRUSS	6455	EACH					
OSS ALUMINUM 105 FT TRUSS	6457	EACH					
OSS ALUMINUM 110 FT TRUSS	6459	EACH					
OSS ALUMINUM 115 FT TRUSS	6461	EACH					
OSS ALUMINUM 120 FT TRUSS	6463	EACH					
OSS ALUMINUM 125 FT TRUSS	6465	EACH					
OSS ALUMINUM 130 FT TRUSS	6467	EACH					
OSS ALUMINUM 135 FT TRUSS	6469	EACH					
OSS ALUMINUM 140 FT TRUSS	6471	EACH					
OSS GALV STEEL CANTILEVER MOD	6201	EACH					
OSS GALV STEEL CANTILEVER	6415	EACH					
SIGN BRIDGE ATTACHMENT BRACKET							
	6448	EACH					
MISCELLANEOUS							
BARRIER MOUNTING BRACKET	4904	EACH					6
BARRIER WALL POST	20912ND	EACH					6
ROADWAY CROSS SECTION	20419ND	EACH					23
FLEXIBLE DELINEATOR POSTS							
⑬ WHITE	6417	EACH					908
⑬ YELLOW	6418	EACH					729
STAKING	2726	L.S.					
FLASHING ARROW	2775	EACH					
DEMobilIZATION	2569	L.S.					
MAINTAIN & CONTROL TRAFFIC	2650	L.S.					

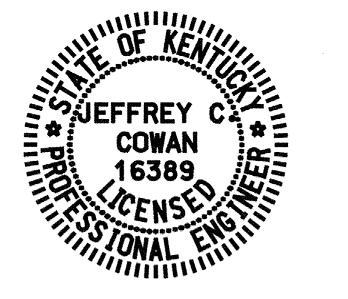
PREPARED BY _____ DATE _____
 CHECKED BY _____ DATE _____
 APPROVED BY _____ DATE _____

Cell Library: kytc sheet.cel
 Cell Name: Summary Sheet
 03-Dec-2007 11:11 AM
 T001005U.dgn
 1/12/2012

Commonwealth of Kentucky
DEPARTMENT OF HIGHWAYS
 COUNTY OF
PIKE
 KY 122 - KY 195

ITEM NO. 12-263.49
 PROJECT NUMBER: FD52 098 0460
 APD 0806 (40)

PREPARED BY:
PALMER ENGINEERING COMPANY


 DESIGNED BY 1/12/2012 BY Jeffrey C. Cowan
 P.E. 16389

SIGNING

REVISD 01-11-2012

ESTIMATE OF QUANTITIES

ITEM	CODE NUMBER	UNIT	QUANTITY				TOTALS
GROUND MOUNTED SIGN SUPPORTS							
⊕ TYPE A	6400	LBS.					22,407
⊕ TYPE C	6441	LBS.					8,619
FOOTINGS FOR SIGNS							
CONCRETE - CLASS "A" FOR SIGNS	6490	CU.YD.					133.1
REINFORCEMENT STEEL	6491	LBS.					5911
SIGN BASE MATERIAL							
ALUMINUM							
② PANEL SIGNS	6405	SQ.FT.					4516.1
③ SHEETING SIGNS							
0.080 GAUGE	6406	SQ.FT.					1273.3
0.125 GAUGE	6407	SQ.FT.					1016.5
STEEL POST ④⑤							
TYPE 1	6410	LN.FT.					1457
TYPE 2	6411	LN.FT.					4495
⑥ TYPE D	21596ND	EACH					19
⑦ MILE MARKERS	6412	EACH					
REFERENCE MARKERS	4903	EACH					
DELINEATORS							
WHITE	6413	EACH					
AMBER	6414	EACH					
REMOVAL ITEMS ⑧⑨							
REMOVE OVERHEAD SIGN SUPPORT STRUCTURE	6449	EACH					
⑩ REMOVE OVERHEAD SIGN SUPPORT STRUCTURE CONCRETE BASE	6450	EACH					
⑪ REMOVE SIGN SUPPORT BEAMS	6451	EACH					
REMOVE SIGN	21373ND	EACH					
MOVE CANTILEVER SIGN SUPPORT	20995ND	EACH					
REMOVE AND RELOCATE SIGN	20418ED	EACH					
STEEL "W" BEAM GUARDRAIL							
SINGLE FACE	2351	LN.FT.					
DOUBLE FACE	2352	LN.FT.					
END TREATMENT TYPE 1	2367	EACH					
END TREATMENT TYPE 2A	2369	EACH					

ITEM	CODE NUMBER	UNIT	QUANTITY				TOTALS
OVERHEAD SIGN SUPPORTS ⑫							
OSS ALUMINUM 60 FT TRUSS	6422	EACH					2
OSS ALUMINUM 65 FT TRUSS	6424	EACH					
OSS ALUMINUM 70 FT TRUSS	6426	EACH					1 (14)
OSS ALUMINUM 75 FT TRUSS	6436	EACH					
OSS ALUMINUM 80 FT TRUSS	6438	EACH					
OSS ALUMINUM 85 FT TRUSS	6443	EACH					
OSS ALUMINUM 90 FT TRUSS	6445	EACH					
OSS ALUMINUM 95 FT TRUSS	6453	EACH					
OSS ALUMINUM 100 FT TRUSS	6455	EACH					
OSS ALUMINUM 105 FT TRUSS	6457	EACH					
OSS ALUMINUM 110 FT TRUSS	6459	EACH					
OSS ALUMINUM 115 FT TRUSS	6461	EACH					
OSS ALUMINUM 120 FT TRUSS	6463	EACH					
OSS ALUMINUM 125 FT TRUSS	6465	EACH					
OSS ALUMINUM 130 FT TRUSS	6467	EACH					
OSS ALUMINUM 135 FT TRUSS	6469	EACH					
OSS ALUMINUM 140 FT TRUSS	6471	EACH					
OSS GALV STEEL CANTILEVER MOD	6201	EACH					
OSS GALV STEEL CANTILEVER	6415	EACH					
SIGN BRIDGE ATTACHMENT BRACKET							
	6448	EACH					
MISCELLANEOUS							
BARRIER MOUNTING BRACKET	4904	EACH					6
BARRIER WALL POST	20912ND	EACH					6
ROADWAY CROSS SECTION	20419ND	EACH					23
FLEXIBLE DELINEATOR POSTS							
Ⓜ WHITE	6417	EACH					908
Ⓜ YELLOW	6418	EACH					729
STAKING	2726	L.S.					
FLASHING ARROW	2775	EACH					
DEMobilIZATION	2569	L.S.					
MAINTAIN & CONTROL TRAFFIC	2650	L.S.					

NOTES :

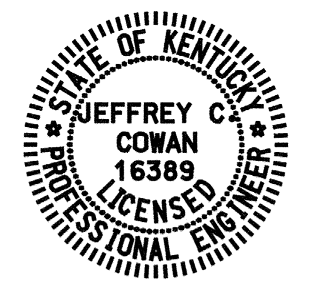
- (1) PAYMENT FOR GROUND MOUNTED SIGN SUPPORTS TYPE A AND TYPE C SHALL BE BASED ON THE NOMINAL WEIGHT OF THE BEAMS. THE NECESSARY GALVANIZING, HARDWARE, ETC. IS TO BE CONSIDERED INCIDENTAL. QUANTITIES FOR TYPE C SUPPORTS SHALL INCLUDE ALL NECESSARY HARDWARE TO FORM COMPLETE BREAK-AWAY BEAMS. SEE PANEL SIGN DETAIL SHEET.
- (2) QUANTITY SHALL INCLUDE ALL COPY AND HARDWARE NECESSARY TO FORM COMPLETE SIGNS. NO DEDUCTION IN AREA IS TO BE MADE FOR ROUNDING OF CORNERS.
- (3) WITH PERMISSION OF THE ENGINEER, SHEETING SIGNS ON THE RAMPS AND SIDE ROADS MAY BE MOVED TO BE COMPATIBLE WITH THE EXISTING SIGNS.
- (4) QUANTITY IS ESTIMATED. THE EXACT LENGTH SHALL BE DETERMINED BY THE CONTRACTOR AND APPROVED BY THE ENGINEER.
- (5) WHERE REQUIRED, BRACING FOR SHEETING SIGNS SHALL BE INCIDENTAL TO STEEL POST. SEE SHEETING SIGN DETAIL SHEET.
- (6) QUANTITY SHALL INCLUDE ALL MATERIAL NECESSARY TO FORM A COMPLETE BREAK-AWAY ASSEMBLY. TYPE I POSTS AND CONCRETE SHALL BE PAID SEPARATELY. SEE SHEETING SIGN DETAIL SHEET.
- (7) QUANTITY SHALL INCLUDE SIGN AND POST.
- (8) ALL MATERIALS REMOVED AND NOT REUSED, SUCH AS SIGNS, SIGN LIGHTS, SIGN SUPPORTS, ETC. SHALL BECOME THE PROPERTY OF THE CONTRACTOR.
- (9) THE REMOVAL OF ALL TYPE I OR II POSTS AND ALL SHEETING SIGNS SHALL BE INCIDENTAL TO THE PROJECT WITH NO ADDITIONAL PAYMENT BEING ALLOWED. ALL MATERIAL SHALL BE STORED IN ACCORDANCE WITH NOTE (8) ABOVE.
- (10) WHERE THE REMOVAL OF OVERHEAD STRUCTURE CONCRETE BASE IS CALLED FOR, THE BASE IS TO BE REMOVED TO A MINIMUM OF ONE FOOT (1') BELOW THE GROUND LINE, BACKFILLED TO EXISTING GROUND LINE, AND THE DISTURBED AREAS RESEDED.
- (11) WHERE THE REMOVAL OF BEAM SIGN SUPPORTS IS CALLED FOR, THE BEAM AND ANY CONCRETE PROJECTING ABOVE THE GROUND LINE ARE TO BE CUT OFF A MINIMUM OF ONE FOOT (1') BELOW EXISTING GROUND LINE OR THE ENTIRE BEAM AND CONCRETE BASE ARE TO BE REMOVED COMPLETELY AND BACKFILLED TO EXISTING GROUND LINE.
- (12) QUANTITY SHALL INCLUDE W-BARS AND ALL HARDWARE NECESSARY FOR ATTACHING SIGNS TO SUPPORTS.
- (13) QUANTITY IS ESTIMATED. THE EXACT NUMBER SHALL BE DETERMINED BY THE CONTRACTOR AND APPROVED BY THE ENGINEER. SEE SIGNING POSITIONING DETAIL SHEET FOR DELINEATOR PLACEMENT.
- (14) FOOTER AND FOUNDATION ALREADY CONSTRUCTED FOR TRUSS LOCATED AT STATION 1+160

CHANGED QUANTITY FOR ITEM 6422 FROM 0 TO 2
CHANGED QUANTITY FOR ITEM 6426 FROM 3 TO 1

PREPARED BY _____ DATE _____
CHECKED BY _____ DATE _____
APPROVED BY _____ DATE _____

Cell Library: kytc sheet.cel
Cell Name: Summary Sheet
03-Dec-2007 11:11 AM
T001005U.dgn

1/12/2012

Commonwealth of Kentucky DEPARTMENT OF HIGHWAYS COUNTY OF PIKE KY 122 - KY 195		PREPARED BY: PALMER ENGINEERING COMPANY 
ITEM NO. 12-263.49 PROJECT FD52 098 0460 NUMBER: APD 0806 (40)	DESIGNED BY <u>1/12/2012</u> BY <u>Jeffrey C. Cowan</u> P.E. 16389	

GENERAL NOTES

50'-70' ALUMINUM OVERHEAD SIGN SUPPORT

SPECIFICATIONS: All References to the Standard Specifications are to the Current Edition of the Kentucky Department of Highways Standard Specifications for Road and Bridge Construction. All References to the AASHTO Specifications are to the 2002 Edition of the AASHTO Standard Specifications for Highway Bridges.

DESIGN: Designed in accordance with the AASHTO Standard Specifications for Structural Supports for Highway Signs, Luminaires and Traffic Signals published by AASHTO, 2000 with wind velocity to 80 MPH.

SUPERELEVATION OF ROADWAY: The Contractor shall allow for differences in elevations across the full shoulder width as shown on the Roadway Plans in maintaining the required 18 foot minimum vertical clearance to the bottom of the lowest part of the sign or support. Sign shall to be centered over the lane or lanes to which it applies unless shown otherwise.

CONCRETE: Class 'A' Concrete is to be used throughout.

BEVELED EDGES: All exposed concrete edges are to be beveled $\frac{3}{4}$ " unless otherwise shown.

REINFORCEMENT: Dimensions from face of concrete to bars are clear except as otherwise shown. Dimensions for bar spacings are distances center to center of bars.

SHOP DRAWINGS: The contractor shall submit detailed Shop Drawings to the Division of Construction for review prior to fabrication in accordance with the specifications.

FABRICATION: The aluminum sign support shall be fabricated in accordance with AASHTO Standard Specifications for Structural Supports for Highway Signs, Luminaires and Traffic Signals.

MILL TEST REPORTS: Notarized test reports in triplicate shall be furnished to the Department of Highways stating that the materials used conform to the specifications.

FOOTINGS: All footings shall be poured against undisturbed earth and are to transfer no more than 1 1/2 Tons Per Square Foot Bearing Pressure to the soil under any design loading conditions.

VERTICAL DIMENSIONS: Vertical Dimensions HR and HL shall not exceed 27 feet and the combined Dimensions (HR + FR) or (HL + FL) shall not exceed 36 feet.

MATERIAL SPECIFICATIONS: The following ASTM designations shall govern all materials used.

ASTM	MATERIAL
B221-08	Extruded Tube, Aluminum Alloy 6061-T6511
B241-02	Pipe, Aluminum 6061-T6
B308-02	Structural Shapes, Aluminum Alloy 6061-T6
B221-08	Extruded Bar, Rod and Shapes, Aluminum Alloy 6061-6511
B209-07	Sheet and Plate, Aluminum Alloy 6061-T651
A320-08	Stainless Steel Hardware, Nuts, Bolts, Washers and Screws
B766-86	Class 12, Cadmium Coating for ASTM A36 Anchor Bolts, Nuts and Washers
B26-05	Sand Mold Casting, Aluminum Alloy 356.0-T6
BI08-08	Permanent Mold Casting, Aluminum Alloy 356.0-T6

ROADWAY CROSS SECTION: The Contractor shall take field measurements at each Sign location and develop a cross section showing the Sign Footing Heights and Elevations, Sign Clearance above the Roadway and Column Heights. These cross sections shall be submitted to the Engineer for approval before ordering any Sign components. This cost is included in the unit price bid for "Roadway Cross Section". A copy of these cross sections shall also accompany the Shop Drawings.

STA. 1+160

NOTE: SIGN TRUSS FOUNDATION DATA (UP TO BASE PLATE) FOR INFORMATION ONLY. SUPERSTRUCTURE TO BE CONSTRUCTED UNDER THIS PROJECT.

DATE:	Oct, 2010	CHECKED BY	
DESIGNED BY:	Standard Sheet	E. Kilgore	
DETAILED BY:			
Commonwealth of Kentucky DEPARTMENT OF HIGHWAYS			
COUNTY PIKE			
ROUTE	ITEM NUMBER		
US 460	12-263.49		
50'-70' OVERHEAD SIGN SUPPORT			
PREPARED BY			SHEET NO.
Division of Structural Design			T056
			DRAWING NO.

GENERAL NOTES

50'-70' ALUMINUM OVERHEAD SIGN SUPPORT

REVISED 01-11-2012

SPECIFICATIONS: All References to the Standard Specifications are to the Current Edition of the Kentucky Department of Highways Standard Specifications for Road and Bridge Construction. All References to the AASHTO Specifications are to the 2002 Edition of the AASHTO Standard Specifications for Highway Bridges.

DESIGN: Designed in accordance with the AASHTO Standard Specifications for Structural Supports for Highway Signs, Luminaires and Traffic Signals published by AASHTO, 2000 with wind velocity to 80 MPH.

SUPERELEVATION OF ROADWAY: The Contractor shall allow for differences in elevations across the full shoulder width as shown on the Roadway Plans in maintaining the required 18 foot minimum vertical clearance to the bottom of the lowest part of the sign or support. Sign shall to be centered over the lane or lanes to which it applies unless shown otherwise.

CONCRETE: Class 'A' Concrete is to be used throughout.

BEVELED EDGES: All exposed concrete edges are to be beveled $\frac{3}{4}$ " unless otherwise shown.

REINFORCEMENT: Dimensions from face of concrete to bars are clear except as otherwise shown. Dimensions for bar spacings are distances center to center of bars.

SHOP DRAWINGS: The contractor shall submit detailed Shop Drawings to the Division of Construction for review prior to fabrication in accordance with the specifications.

FABRICATION: The aluminum sign support shall be fabricated in accordance with AASHTO Standard Specifications for Structural Supports for Highway Signs, Luminaires and Traffic Signals.

MILL TEST REPORTS: Notarized test reports in triplicate shall be furnished to the Department of Highways stating that the materials used conform to the specifications.

FOOTINGS: All footings shall be poured against undisturbed earth and are to transfer no more than 1 1/2 Tons Per Square Foot Bearing Pressure to the soil under any design loading conditions.

VERTICAL DIMENSIONS: Vertical Dimensions HR and HL shall not exceed 27 feet and the combined Dimensions (HR + FR) or (HL + FL) shall not exceed 36 feet.

MATERIAL SPECIFICATIONS: The following ASTM designations shall govern all materials used.

ASTM	MATERIAL
B221-08	Extruded Tube, Aluminum Alloy 6061-T6511
B241-02	Pipe, Aluminum 6061-T6
B308-02	Structural Shapes, Aluminum Alloy 6061-T6
B221-08	Extruded Bar, Rod and Shapes, Aluminum Alloy 6061-6511
B209-07	Sheet and Plate, Aluminum Alloy 6061-T651
A320-08	Stainless Steel Hardware, Nuts, Bolts, Washers and Screws
B766-86	Class 12, Cadmium Coating for ASTM A36 Anchor Bolts, Nuts and Washers
B26-05	Sand Mold Casting, Aluminum Alloy 356.0-T6
B108-08	Permanent Mold Casting, Aluminum Alloy 356.0-T6

ROADWAY CROSS SECTION: The Contractor shall take field measurements at each Sign location and develop a cross section showing the Sign Footing Heights and Elevations, Sign Clearance above the Roadway and Column Heights. These cross sections shall be submitted to the Engineer for approval before ordering any Sign components. This cost is included in the unit price bid for "Roadway Cross Section". A copy of these cross sections shall also accompany the Shop Drawings.

STA. 1+160

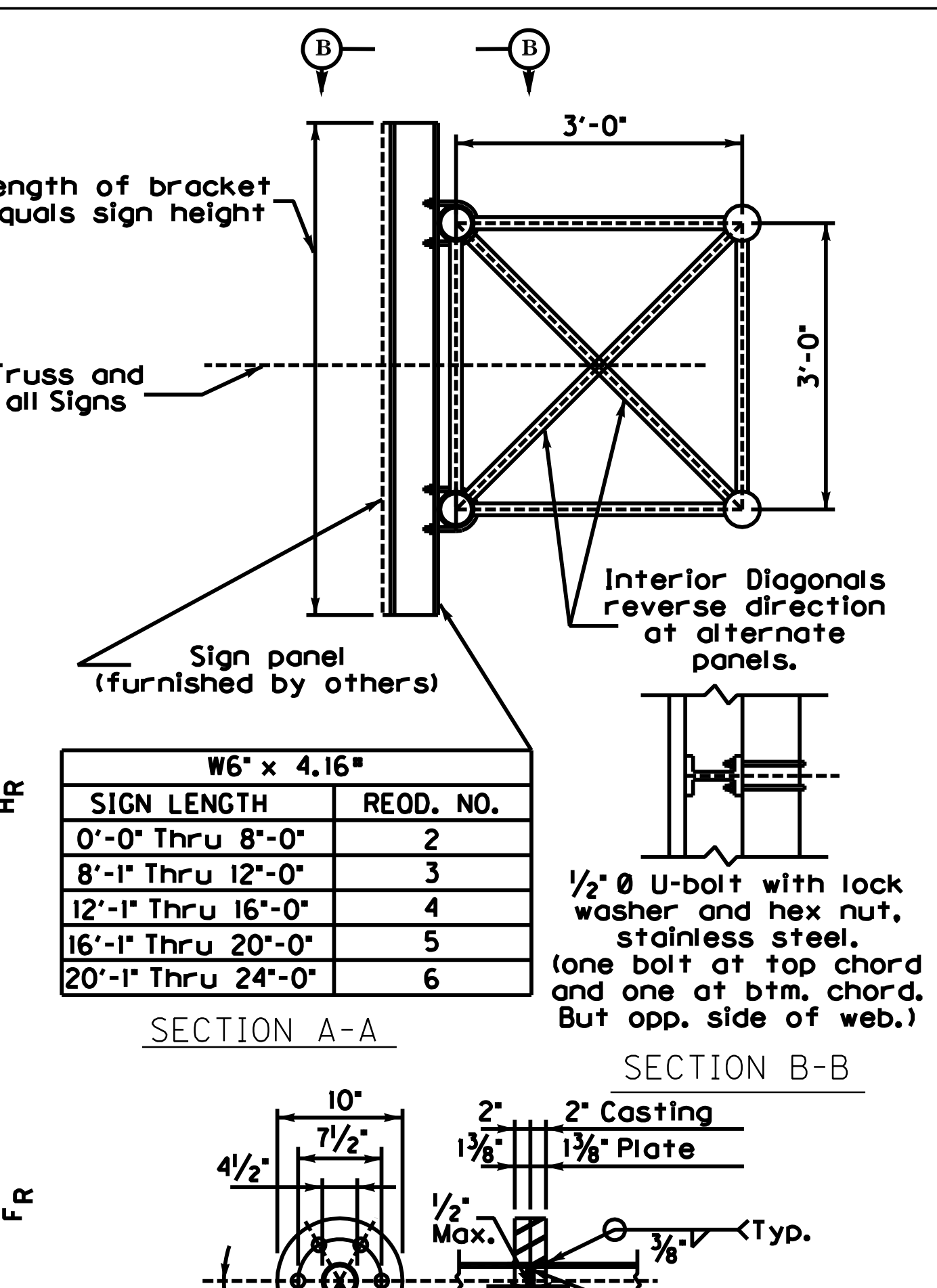
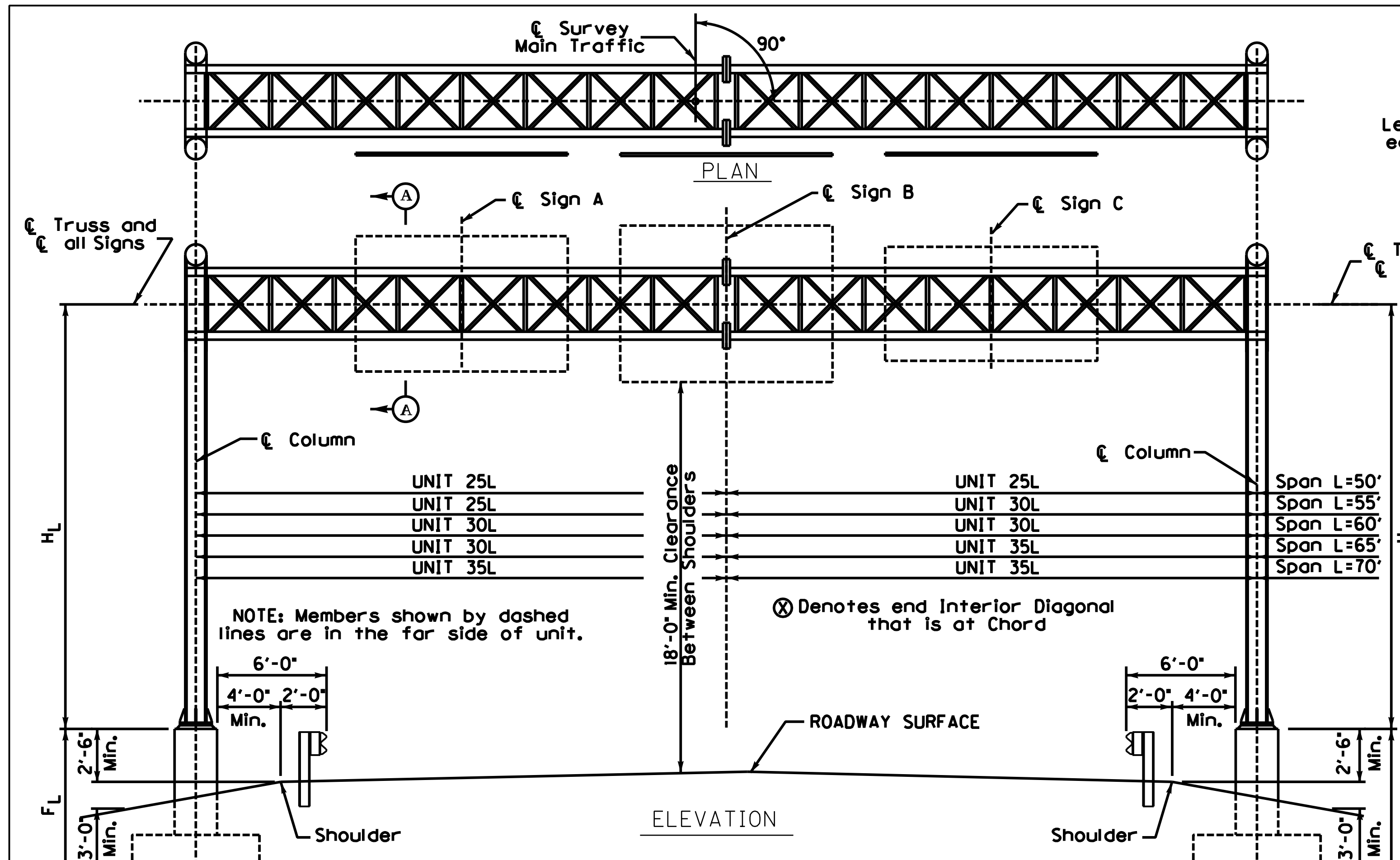
NOTE: SIGN TRUSS FOUNDATION DATA (UP TO BASE PLATE) FOR INFORMATION ONLY. SUPERSTRUCTURE TO BE CONSTRUCTED UNDER THIS PROJECT.

MODIFIED NOTE

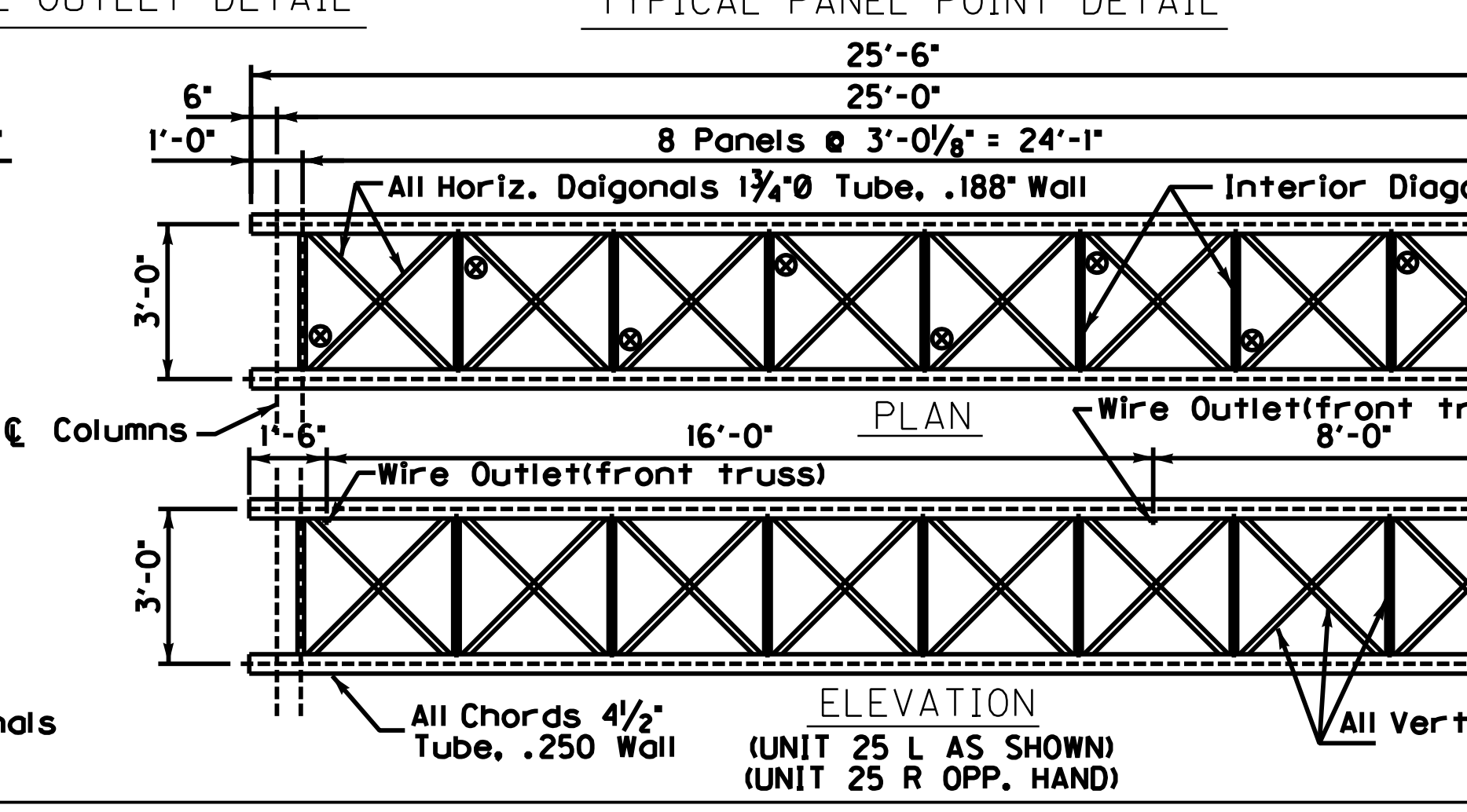
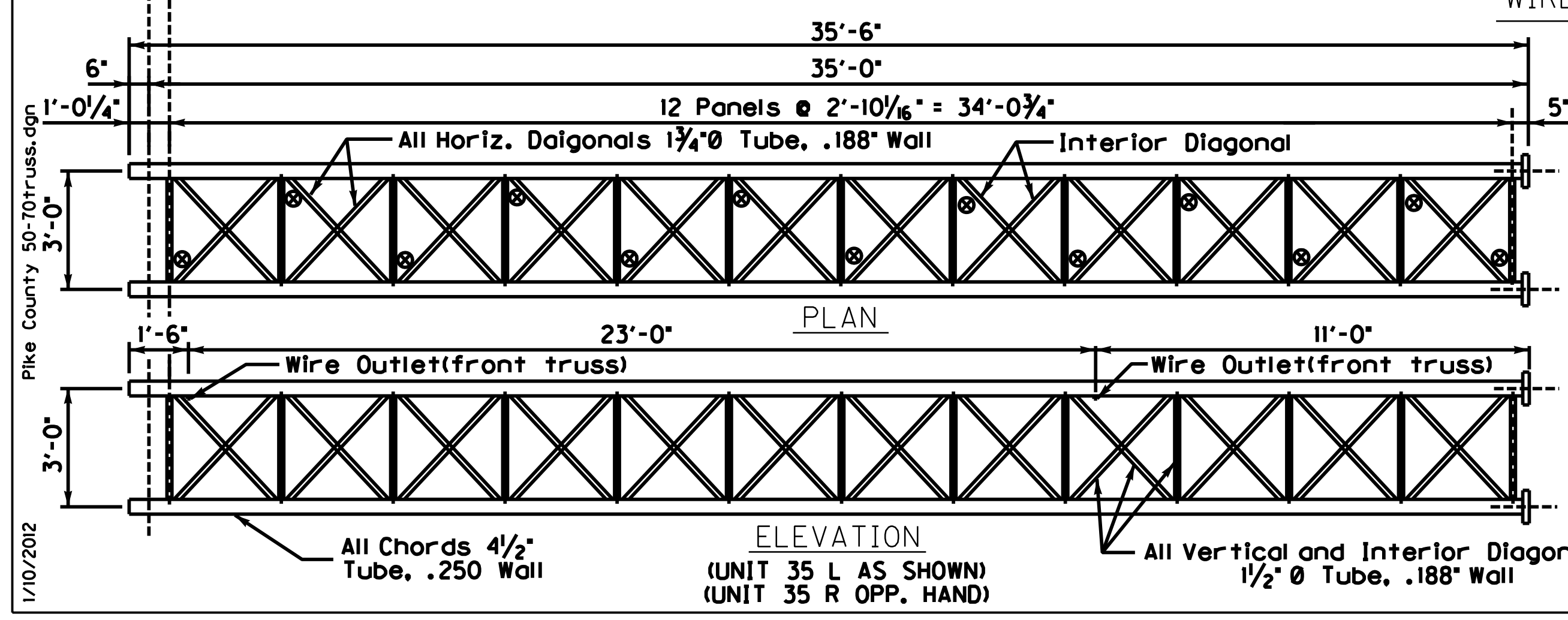
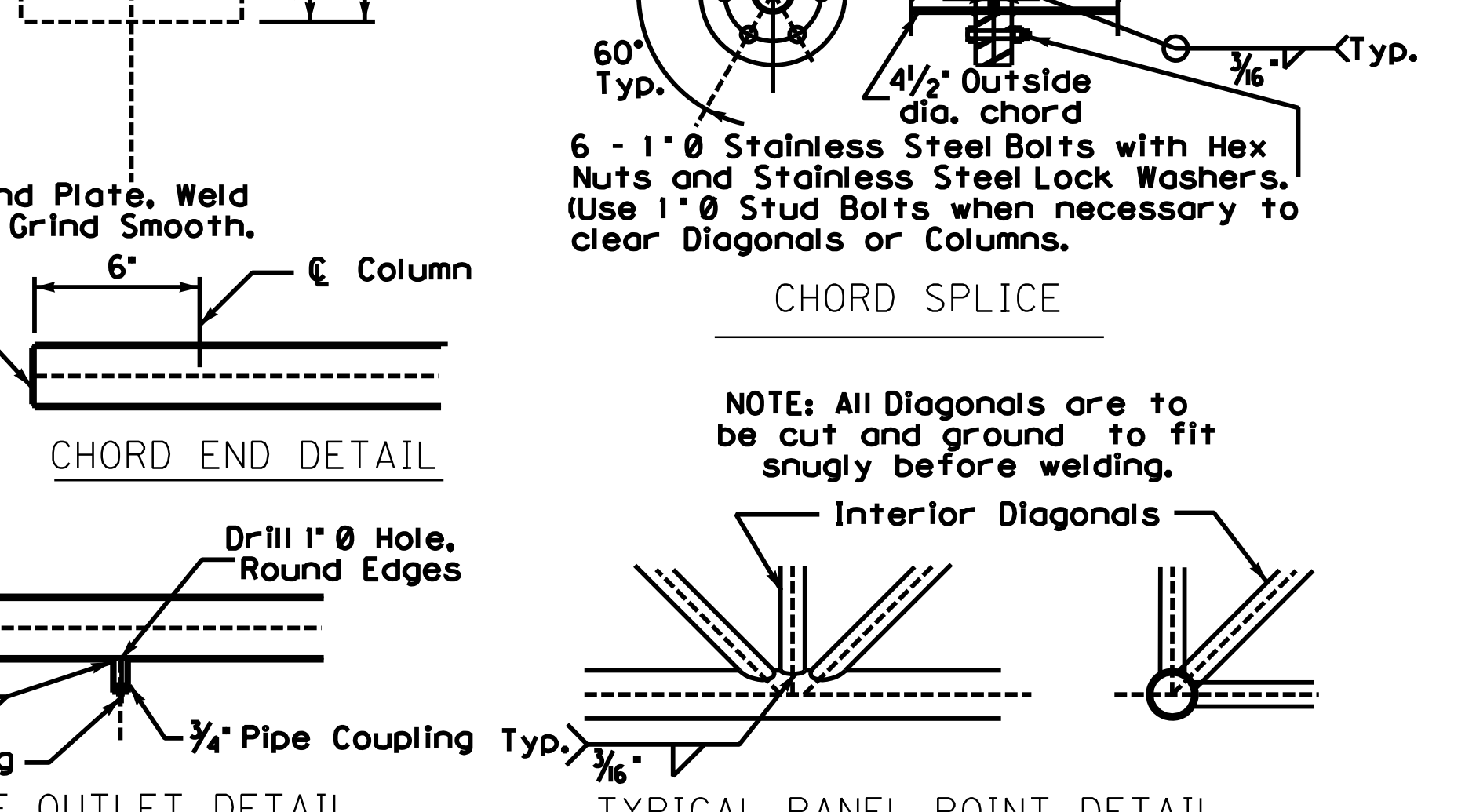
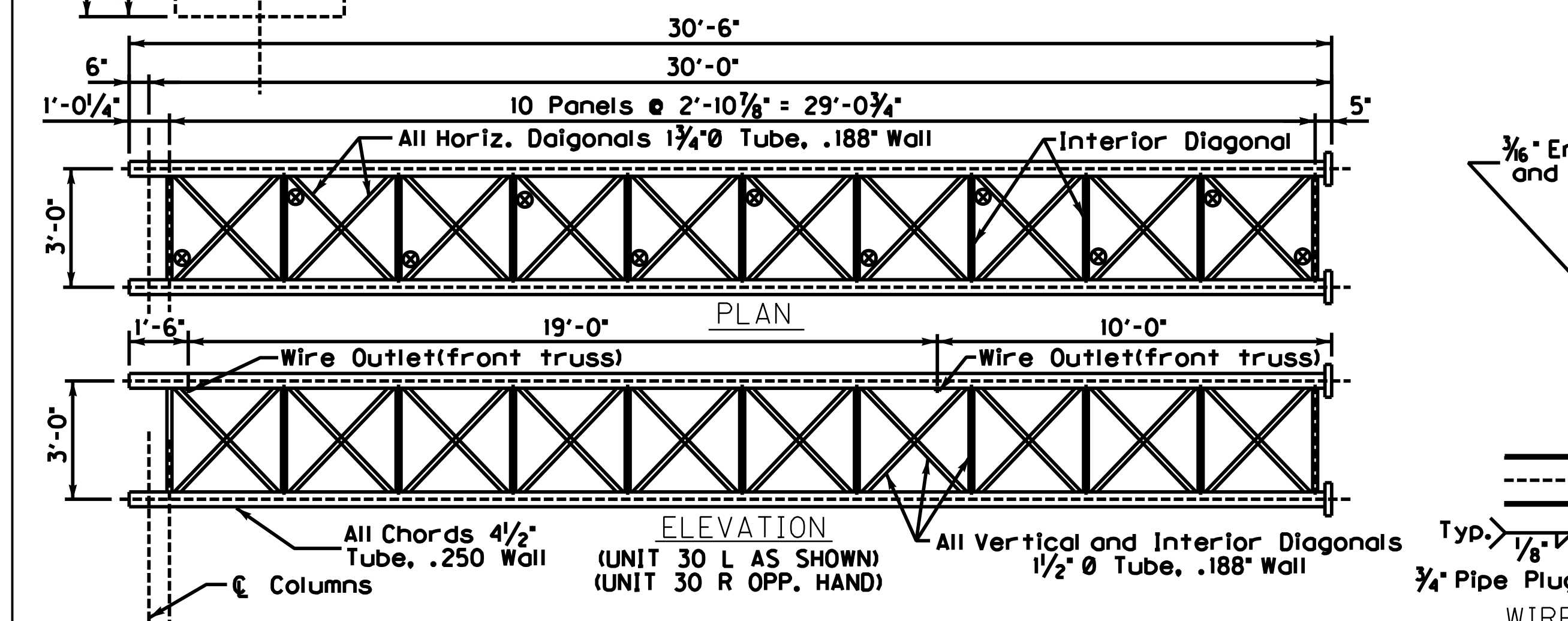
DATE:	Oct, 2010	CHECKED BY:	
DESIGNED BY:	Standard Sheet	E. Kilgore	
DETAILED BY:			
Commonwealth of Kentucky DEPARTMENT OF HIGHWAYS			
COUNTY PIKE			
ROUTE	ITEM NUMBER		
US 460	12-263.49		
50'-70' OVERHEAD SIGN SUPPORT			
PREPARED BY		SHEET NO.	
Division of Structural Design		T056	
		DRAWING NO.	

Support No.	STATION	SPAN		SUPPORT HEIGHT		FOOTING HEIGHT						
		L	HL	HR	FL	FR						
1	1+160	70'	24'	23'	11'	6.5'						
Support No.	SIGN A			SIGN B			SIGN C					
	No.	Horiz.	Vert.	Area	No.	Horiz.	Vert.	Area	No.	Horiz.	Vert.	Area
1	P-1	19.2'	12.3'	236	P-2	19.2'	14.8'	284				

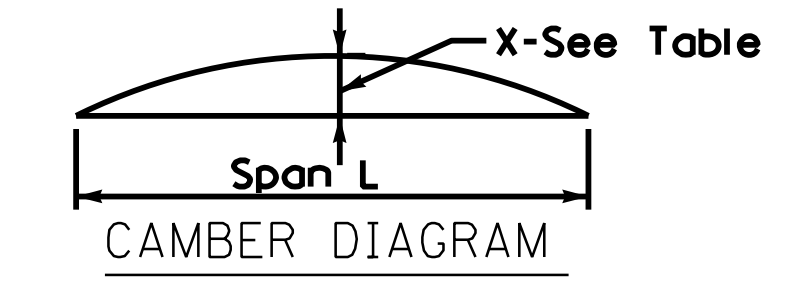
* Total Area includes Exit Number Signs that are not shown.



STA. 1+160
 NOTE: SIGN TRUSS FOUNDATION DATA (UP TO BASE PLATE) FOR INFORMATION ONLY. SUPERSTRUCTURE TO BE CONSTRUCTED UNDER THIS PROJECT.



L	X
50	1'
55	1 1/4'
60	1 1/2'
65	1 3/4'
70	2'



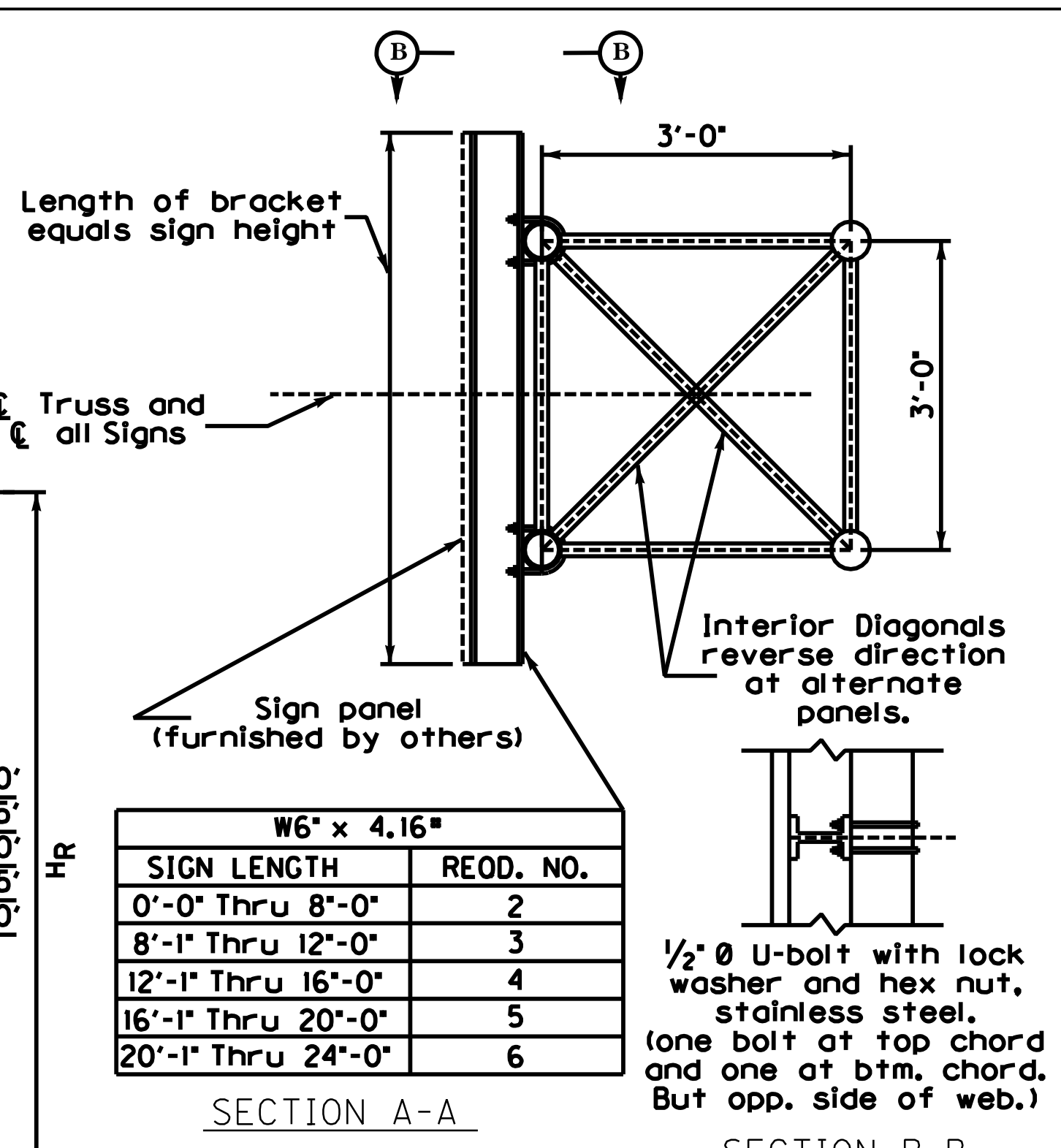
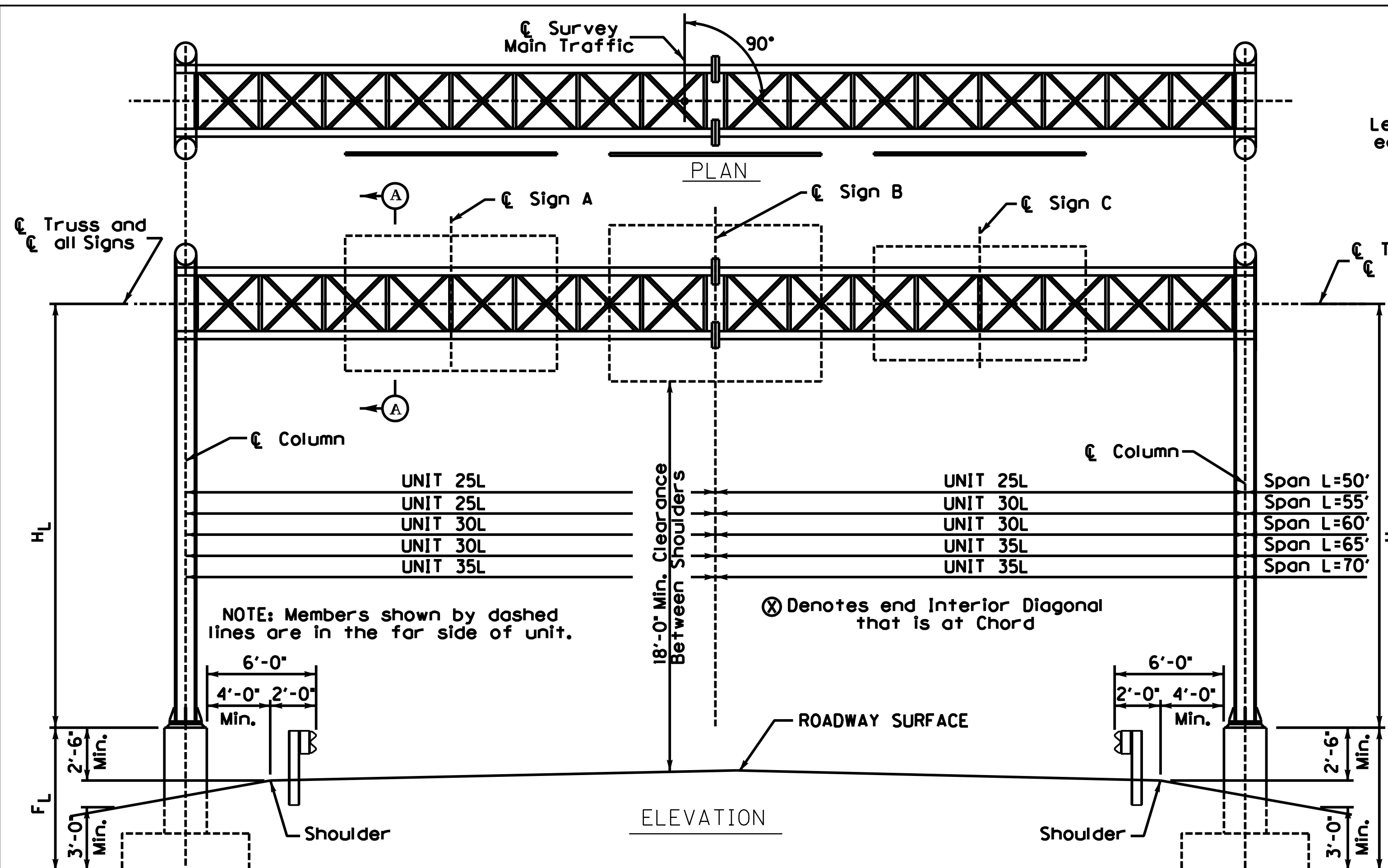
1/10/2012

DATE: Oct, 2010 CHECKED BY: _____
 DESIGNED BY: Standard Sheet E. Kilgore
 DETAILED BY: _____
Commonwealth of Kentucky
DEPARTMENT OF HIGHWAYS
 COUNTY: **PIKE**
 ROUTE: US 460 ITEM NUMBER: 12-263.49
50'-70' OVERHEAD SIGN SUPPORT
 PREPARED BY: Division of Structural Design SHEET NO. T057
 DRAWING NO. _____

Support No.	STATION	SPAN		SUPPORT HEIGHT		FOOTING HEIGHT						
		L	HL	HR	FL	FR						
1	1+160	70'	24'	23'	11'	6.5'						
Support No.	SIGN A			SIGN B			SIGN C					
	No.	Horiz.	Vert.	Area	No.	Horiz.	Vert.	Area	No.	Horiz.	Vert.	Area
1	P-1	19.2'	12.3'	236	P-2	19.2'	14.8'	284				

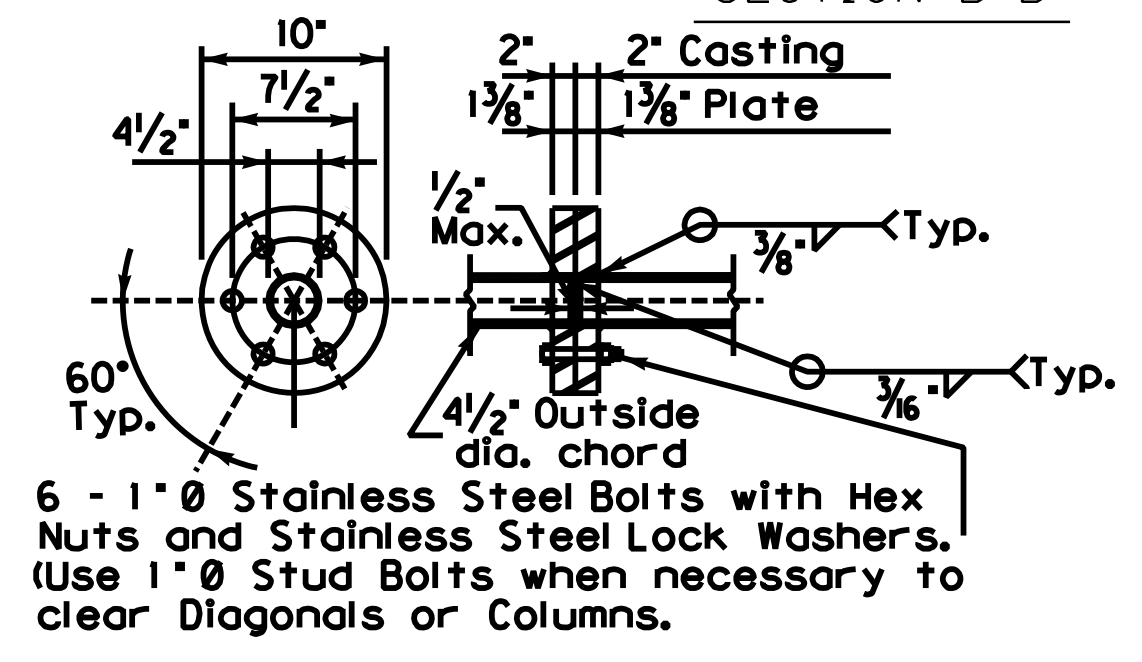
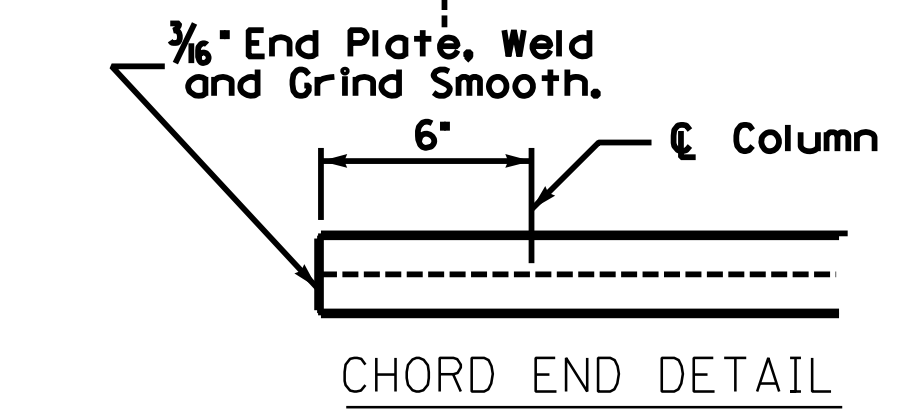
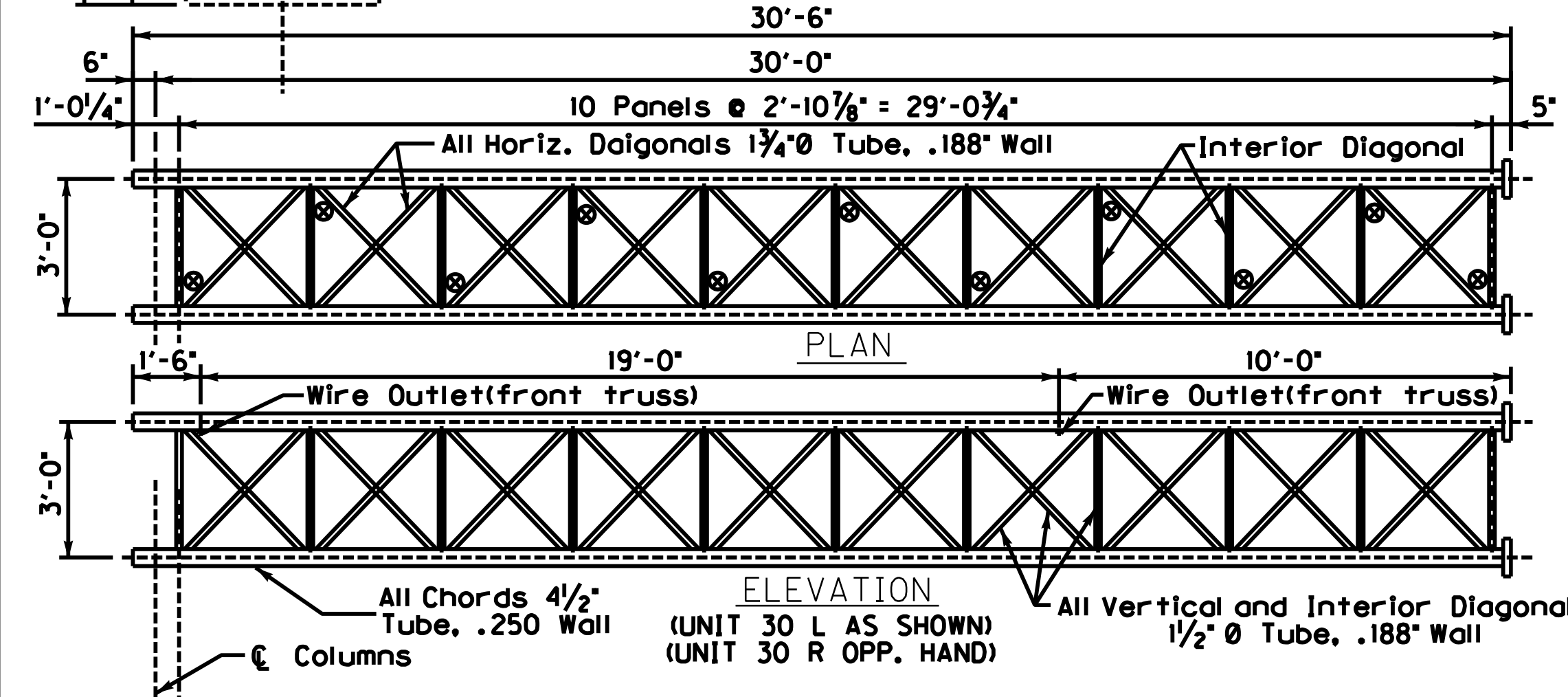
* Total Area includes Exit Number Signs that are not shown.

1 REVISED 01-11-2012

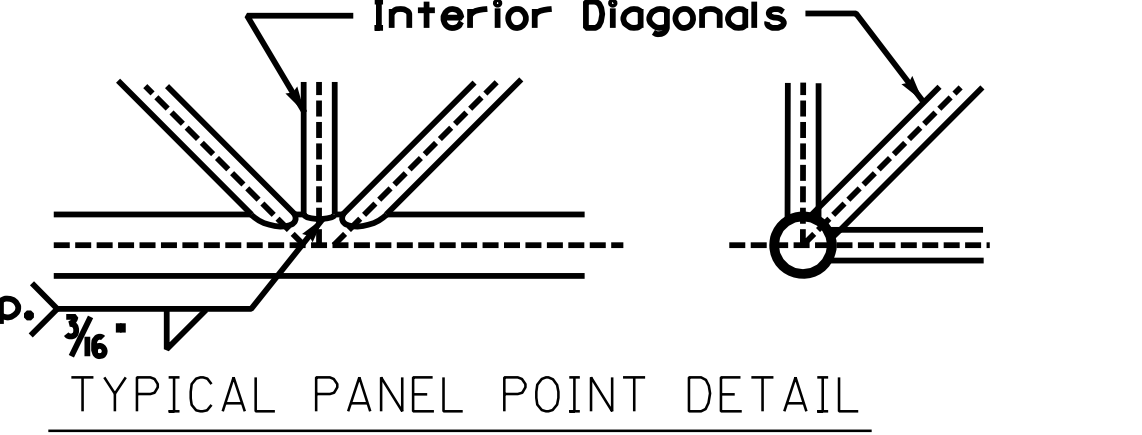
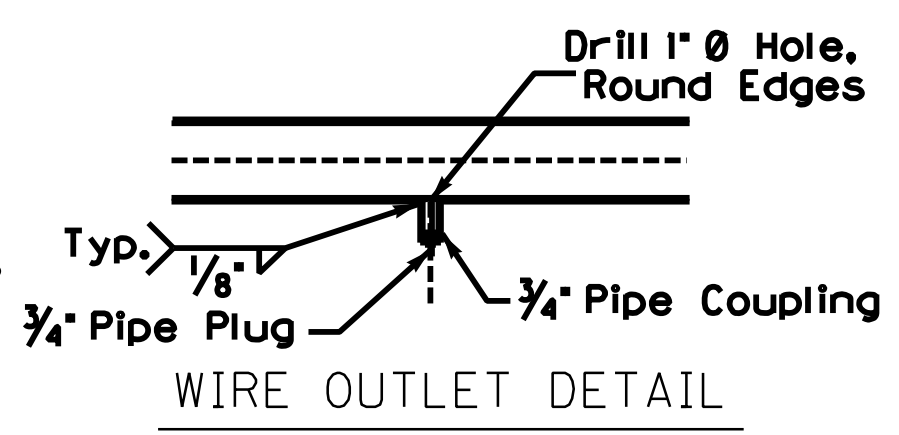
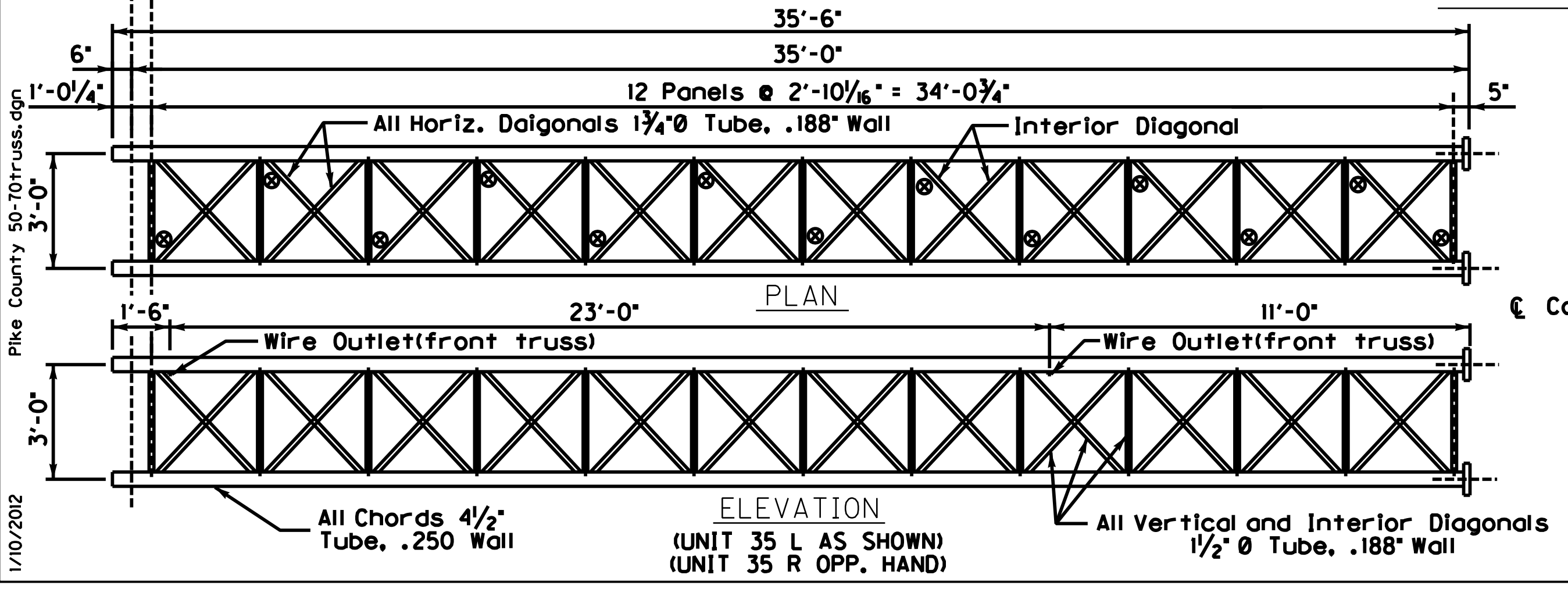


SIGN LENGTH	REOD. NO.
0'-0" Thru 8'-0"	2
8'-1" Thru 12'-0"	3
12'-1" Thru 16'-0"	4
16'-1" Thru 20'-0"	5
20'-1" Thru 24'-0"	6

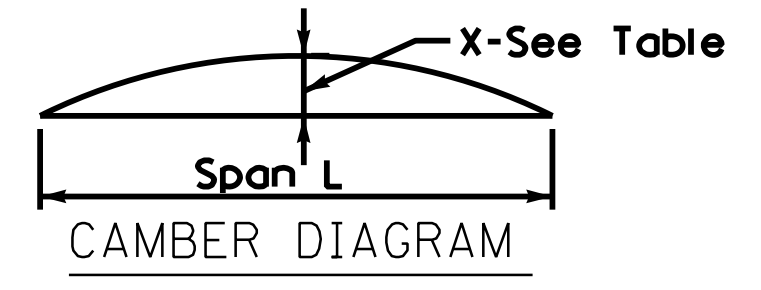
STA. 1+160
NOTE: SIGN TRUSS FOUNDATION DATA (UP TO BASE PLATE) FOR INFORMATION ONLY. SUPERSTRUCTURE TO BE CONSTRUCTED UNDER THIS PROJECT.



NOTE: All Diagonals are to be cut and ground to fit snugly before welding.



L	X
50	1'
55	1 1/4'
60	1 1/2'
65	1 3/4'
70	2'



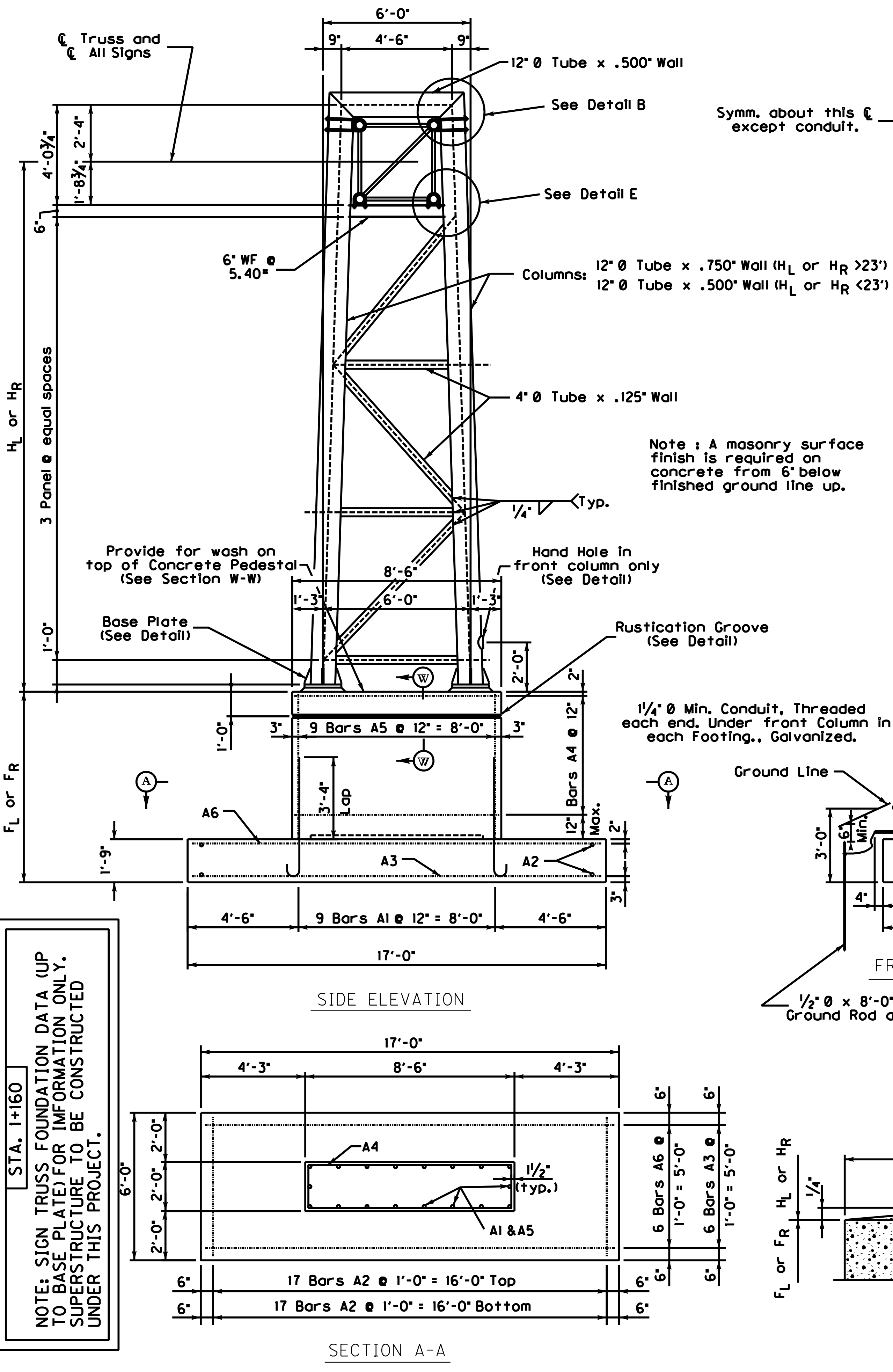
1 MODIFIED NOTE

DATE: Oct, 2010	CHECKED BY:
DESIGNED BY: Standard Sheet E. Kilgore	
DETAILED BY:	
Commonwealth of Kentucky DEPARTMENT OF HIGHWAYS	
PIKE	
ROUTE: US 460	ITEM NUMBER: 12-263.49
50'-70' OVERHEAD SIGN SUPPORT	
PREPARED BY: Division of Structural Design	SHEET NO. T057
	DRAWING NO.

1/10/2012 Pike County 50-70truss.dgn

1/10/2012 Pike County 50-70Truss.dgn

STA. 1+160
NOTE: SIGN TRUSS FOUNDATION DATA (UP TO BASE PLATE) FOR INFORMATION ONLY. SUPERSTRUCTURE TO BE CONSTRUCTED UNDER THIS PROJECT.



Symm. about this ϵ except conduit.

Note: A masonry surface finish is required on concrete from 6' below finished ground line up.

Note: Weld $\frac{1}{2}$ " x 13 Hex Nut to inside of Column opposite hand hole for ground wire.

Cover Plate $4\frac{1}{2}$ " x $\frac{3}{16}$ " x $6\frac{1}{2}$ "

$\frac{1}{4}$ " x 20 Round Head Stainless Steel Screw. Drill and Tap Bar Provide $\frac{3}{16}$ " Hole in Cover Plate

Bar Frame 2 " x $\frac{3}{4}$ " or cut from P_1 $4\frac{1}{2}$ " x 2 " x $6\frac{1}{2}$ " or use Casting.

$\frac{3}{4}$ " ϕ U-Bolt with two Hex Nuts and two Lock Washers. Stainless Steel. $\frac{1}{8}$ " ϕ Holes in WF.

3 " x $\frac{1}{4}$ " x $9\frac{5}{16}$ " Bent Plate

1 " ϕ Pipe Coupling
 1 " ϕ Pipe Plug

Wire Outlet (Front Column Only)

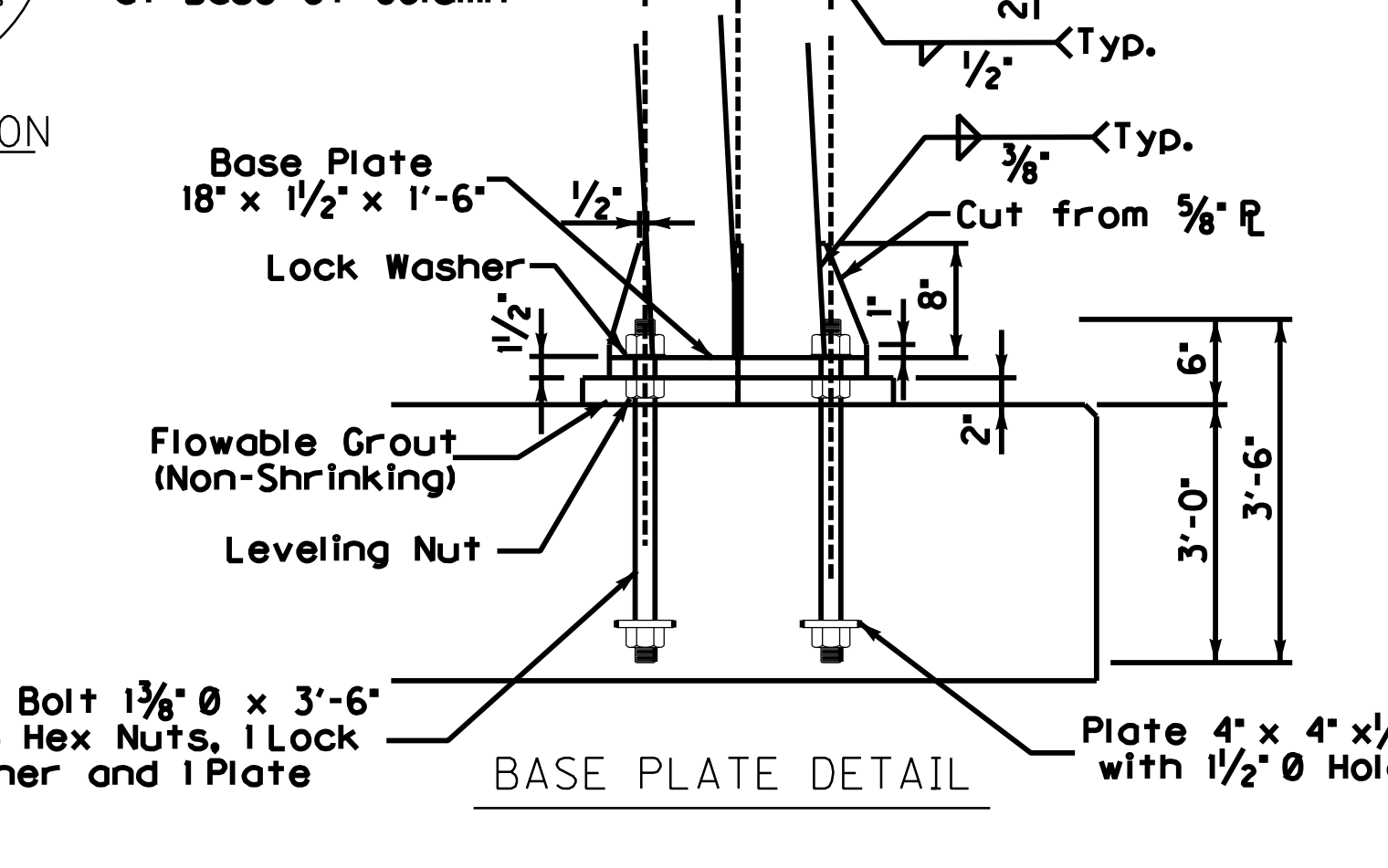
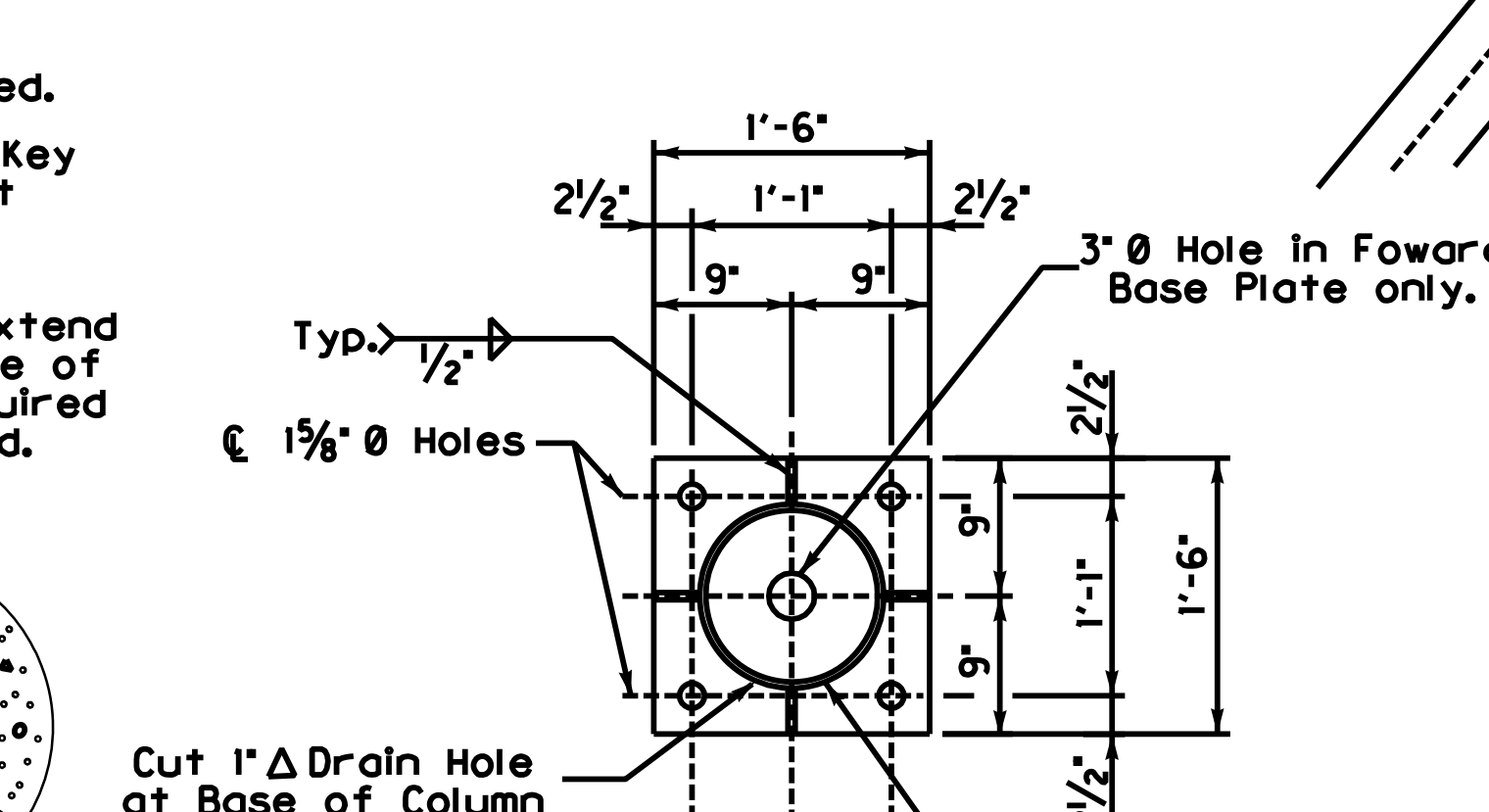
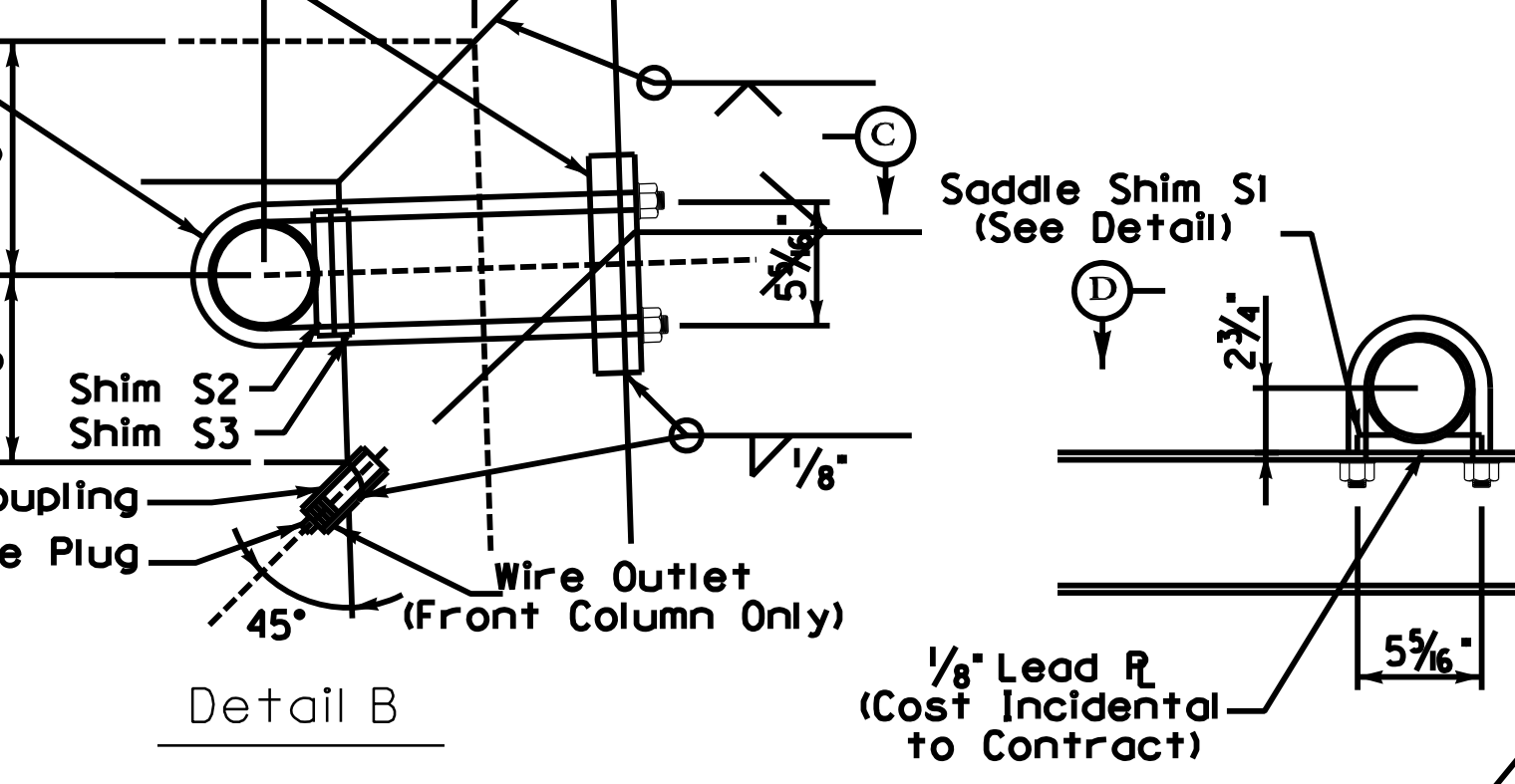
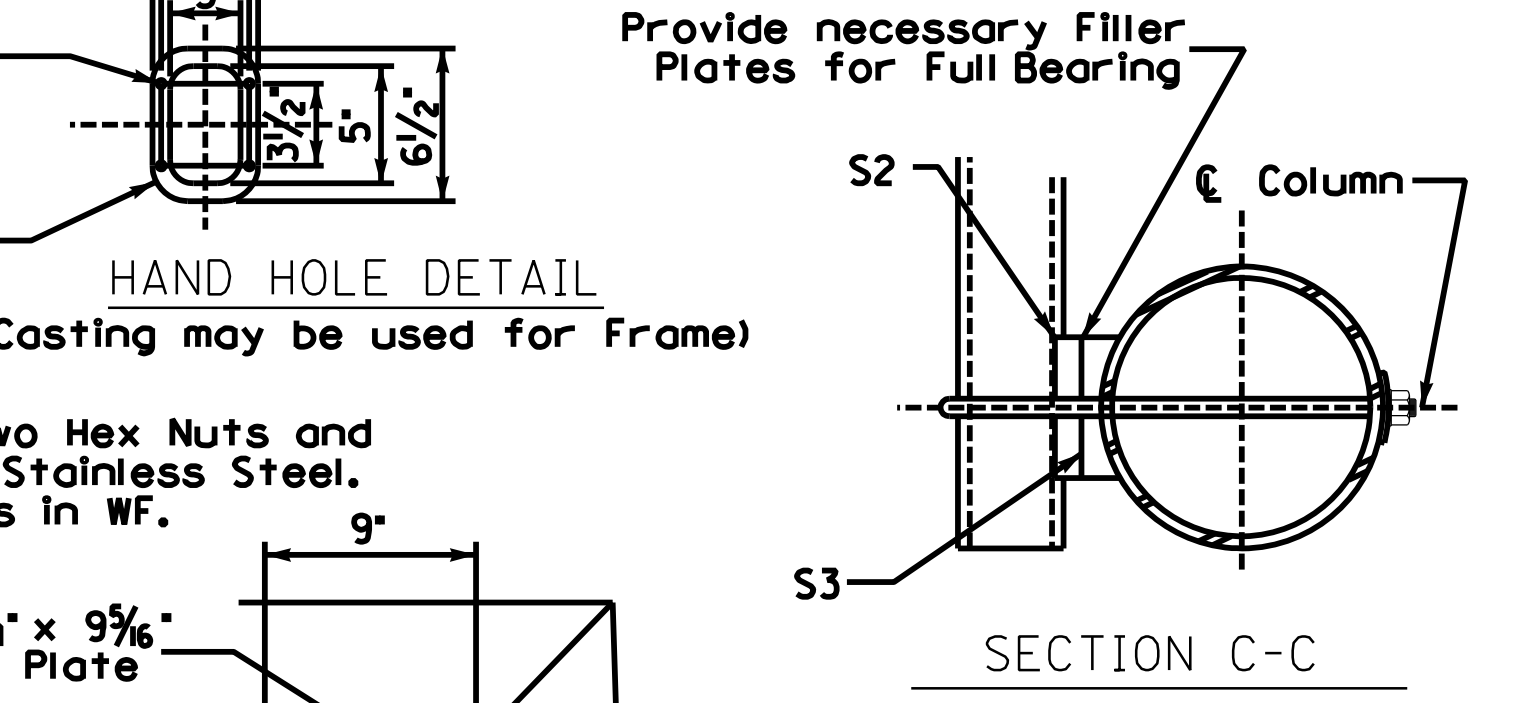
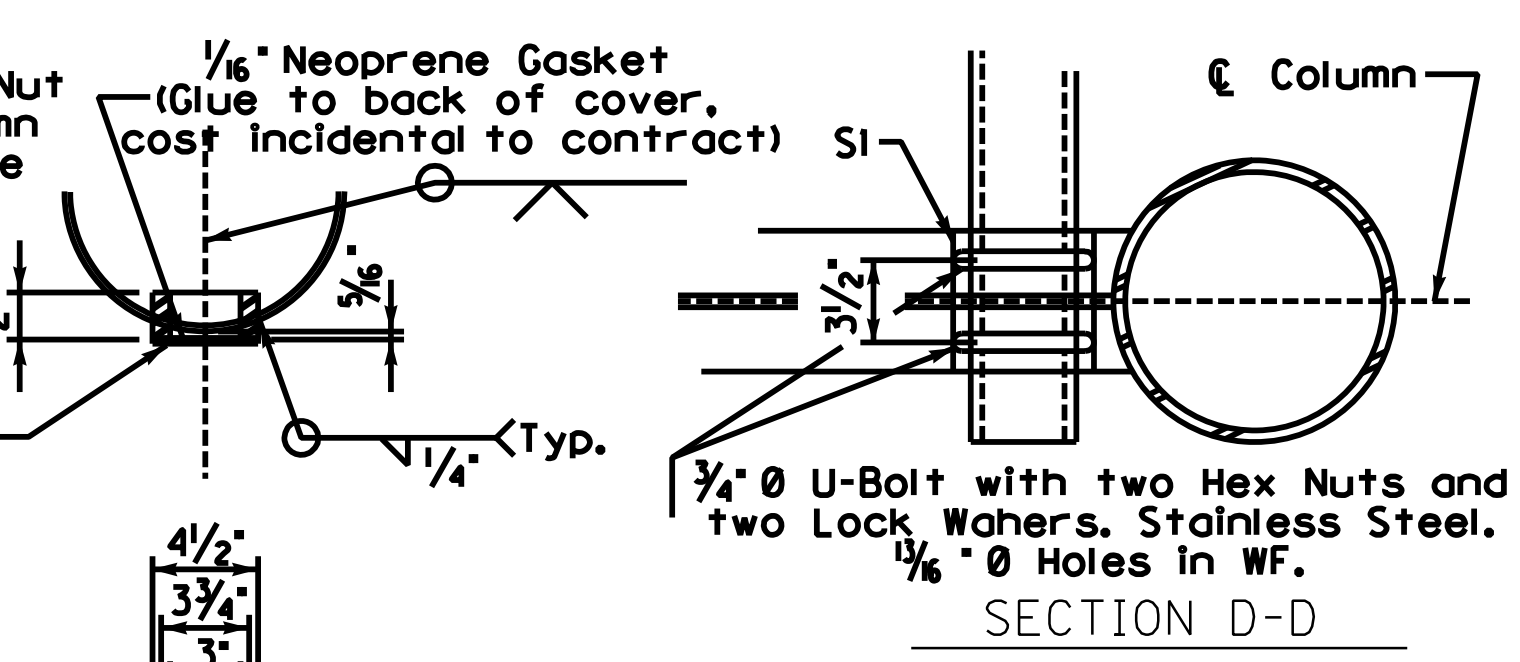
$\frac{1}{8}$ " Lead R (Cost incidental to Contract)

Conduit may extend from any face of Footing as required in the field.

$\frac{1}{2}$ " ϕ x 8 "- 0 " Copper Weld Ground Rod at each Footing

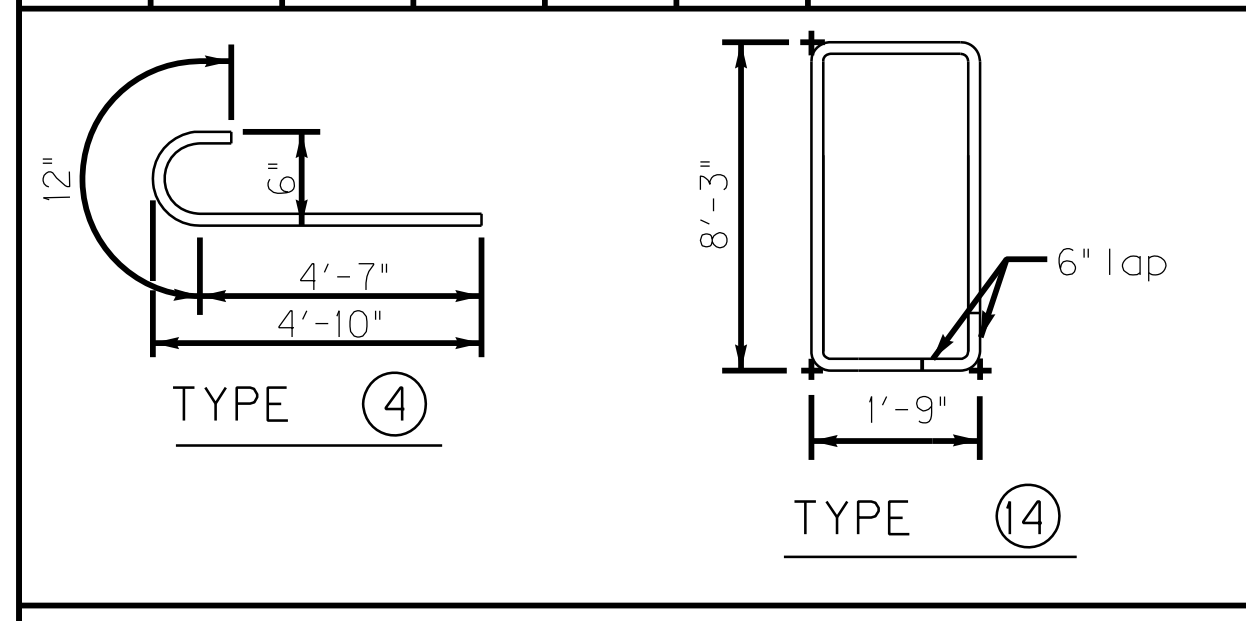
RUSTICATION GROOVE

Anchor Bolt $1\frac{3}{8}$ " ϕ x 3 "- 6 " with 3 Hex Nuts, 1 Lock Washer and 1 Plate



BILL OF REINFORCEMENT FOR FOOTING

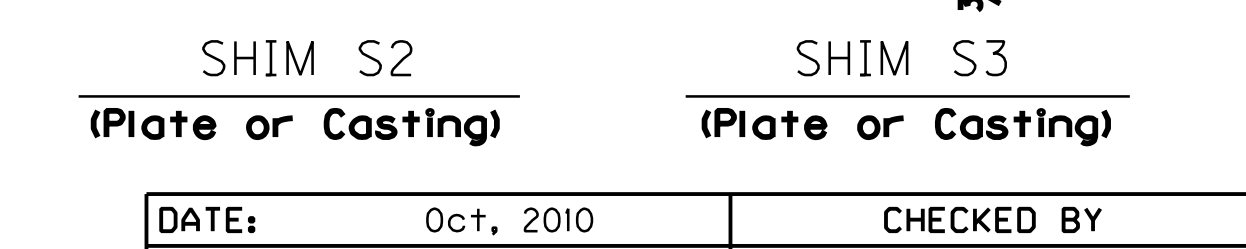
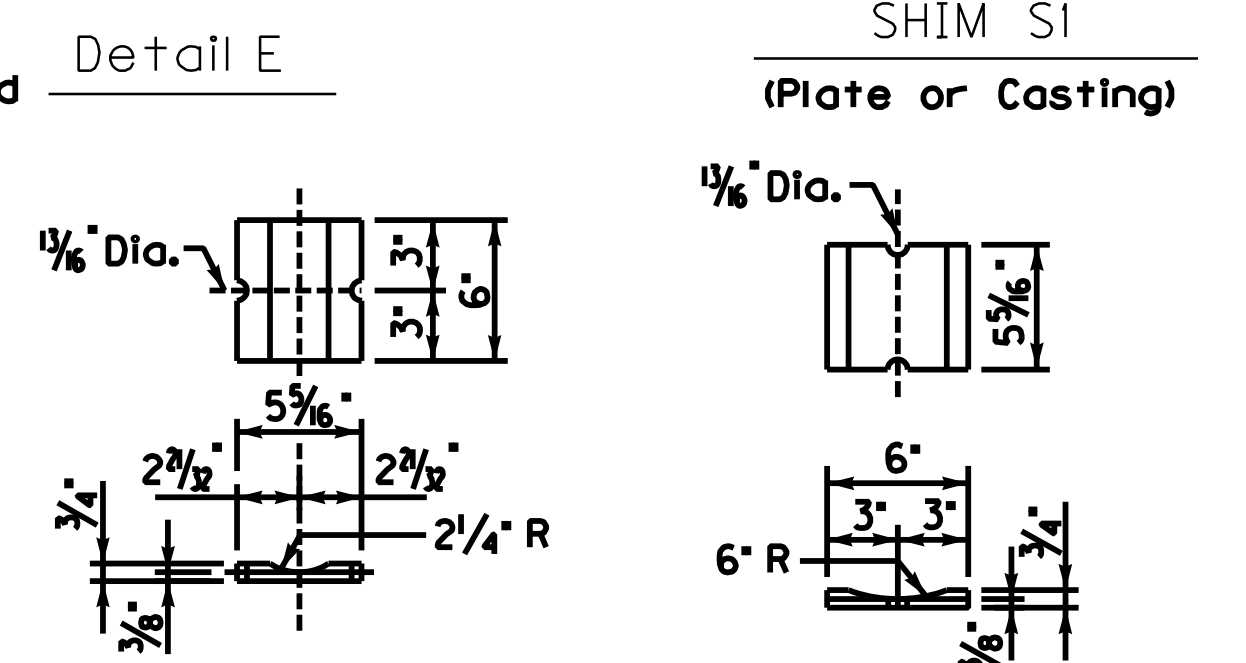
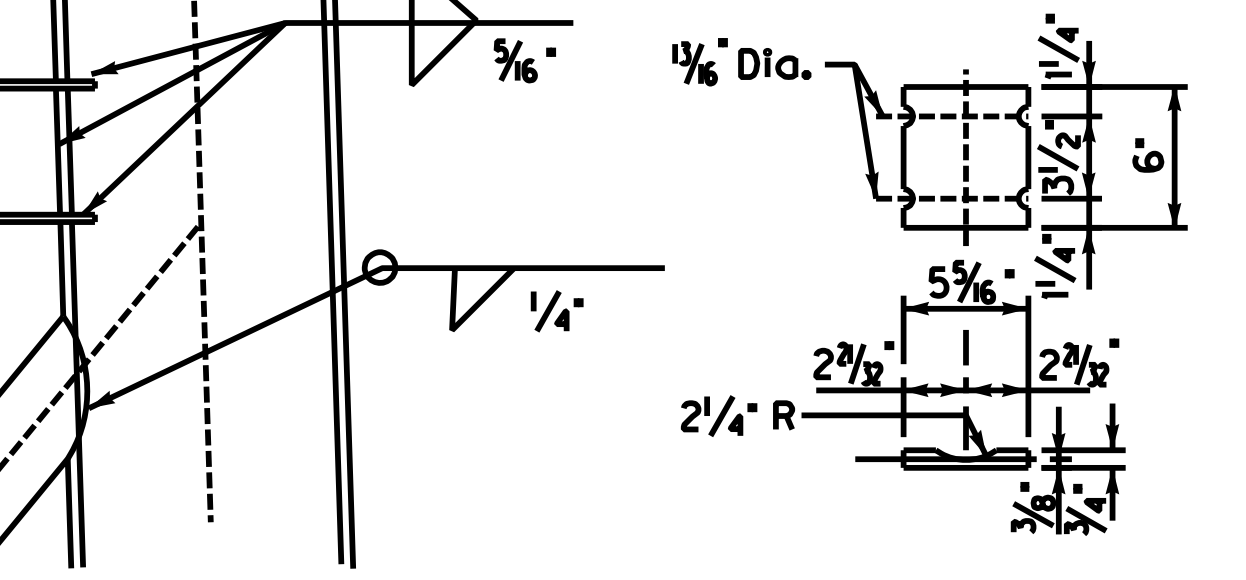
MARK	TYPE	NO.	SIZE	LENGTH		LOCATION
				FT.	IN.	
A1	(4)	20	#6	5	7	Footing & Wall
A2	Str.	34	#5	5	8	"
A3	Str.	6	#9	16	8	"
A4	(4)	var.	#4	20	9	Wall
A5	Str.	20	#5	F - (1'-11")		"
A6	Str.	6	#5	16	8	Footing



* ESTIMATE OF QUANTITIES FOR FOOTING

	Conc. Class "A"	Reinforcement
F=6'-0"	9.3 cy	967 lbs.
1' of additional Pedestal height	0.63 cy	35 lbs.

* Approx. estimate is for information only. Tabulated FL and FR shall be verified by the Engineer in the field.



DATE: Oct, 2010 CHECKED BY: _____
DESIGNED BY: Standard Sheet E. Kilgore
DETAILED BY: _____

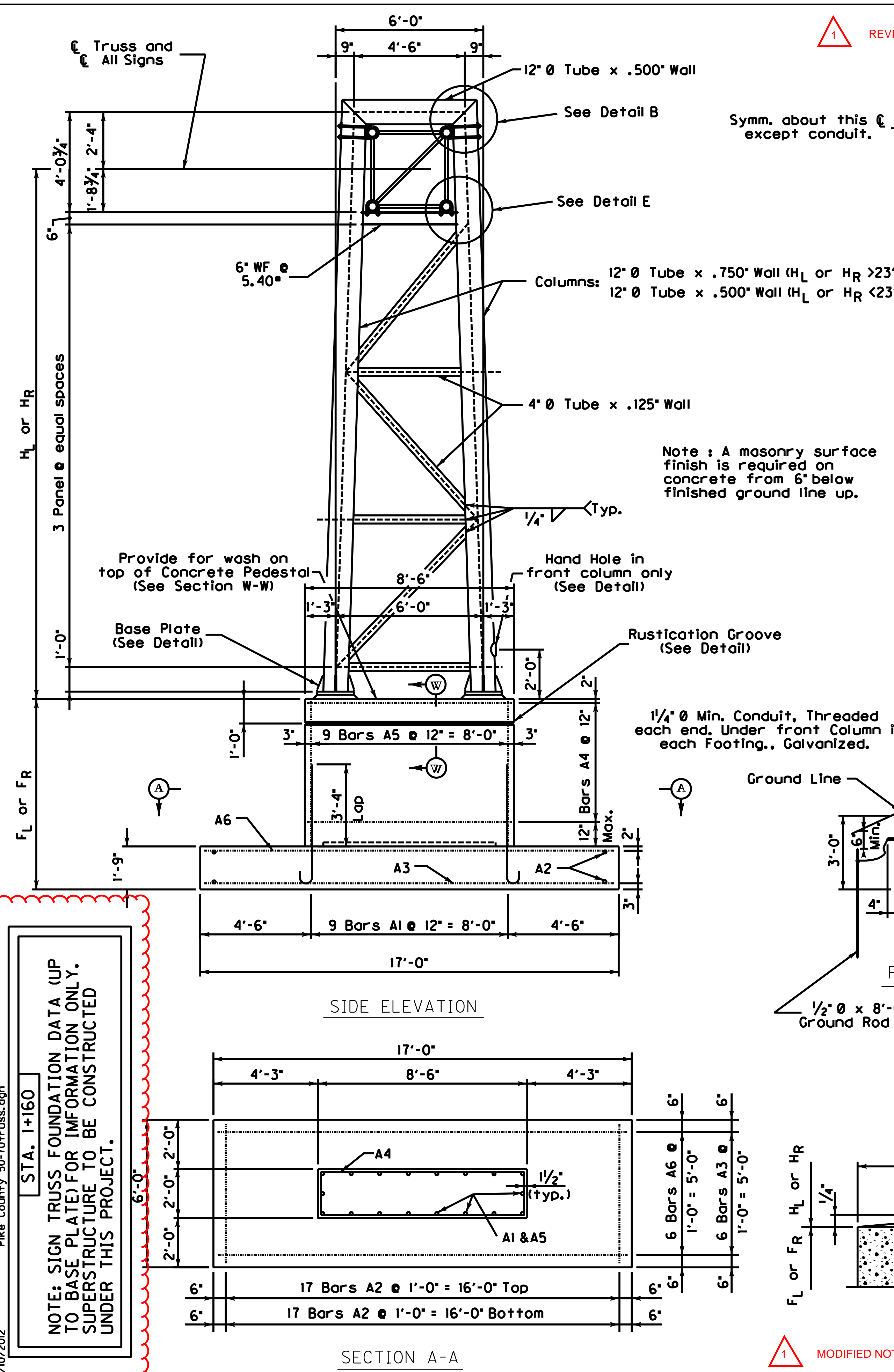
Commonwealth of Kentucky
DEPARTMENT OF HIGHWAYS
COUNTY
PIKE

ROUTE US 460 ITEM NUMBER 12-263.49

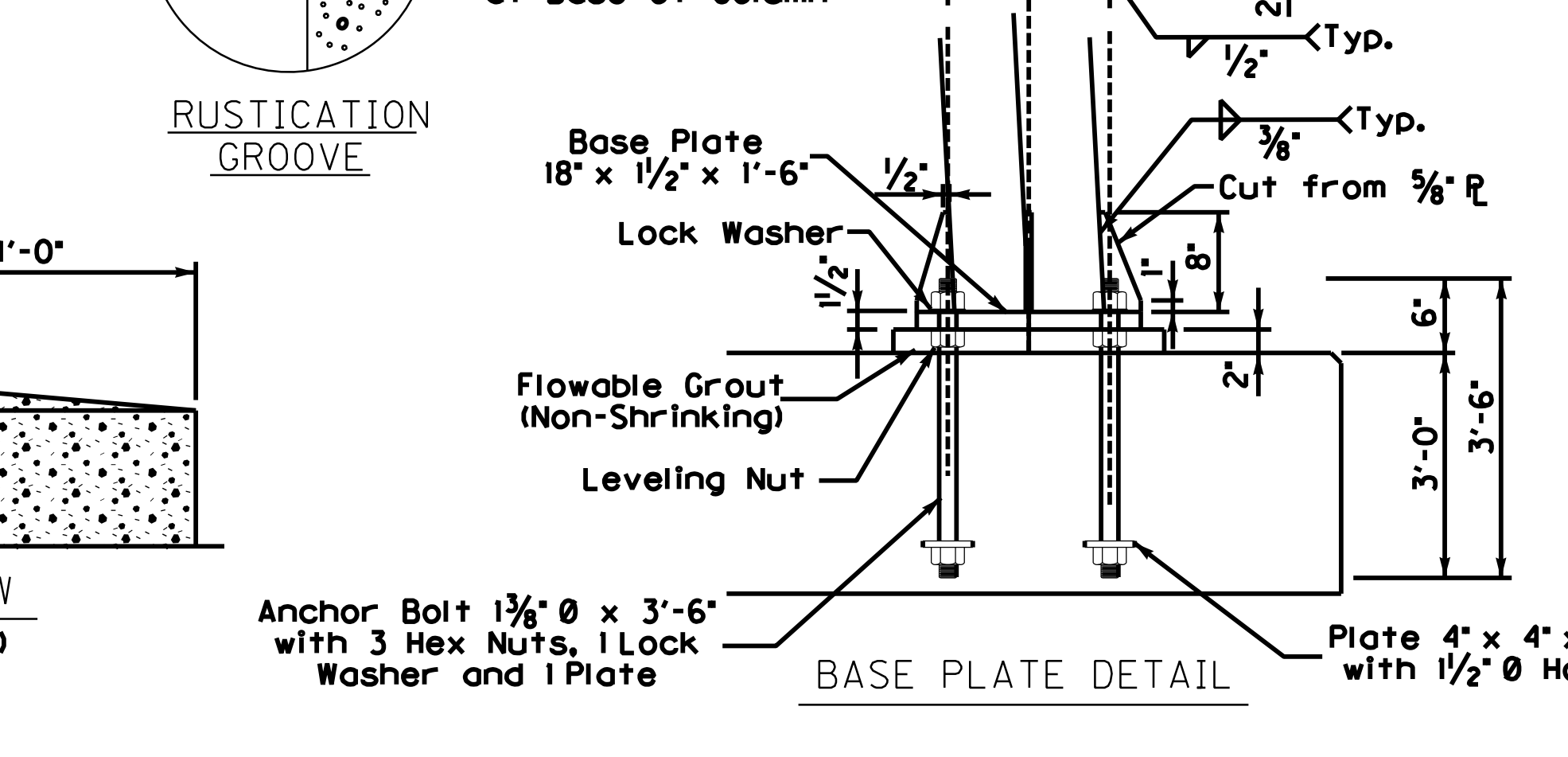
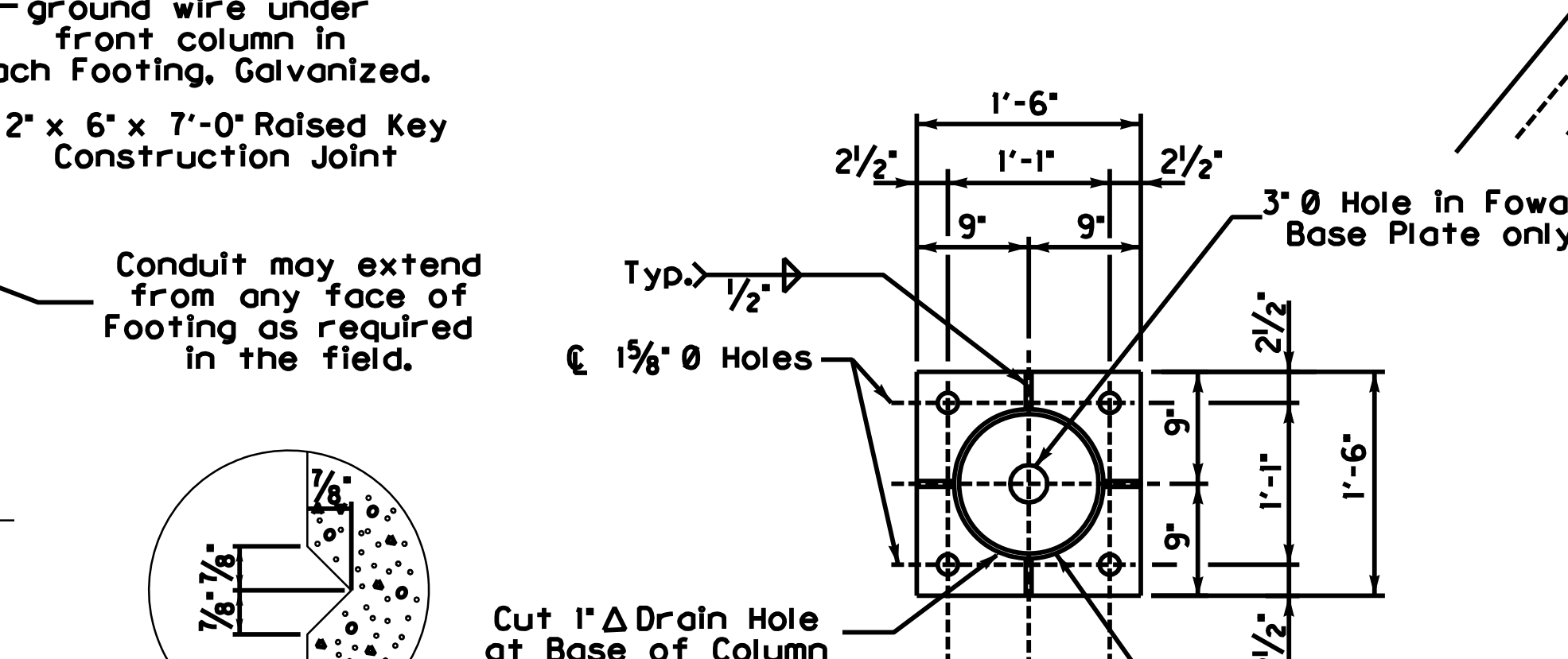
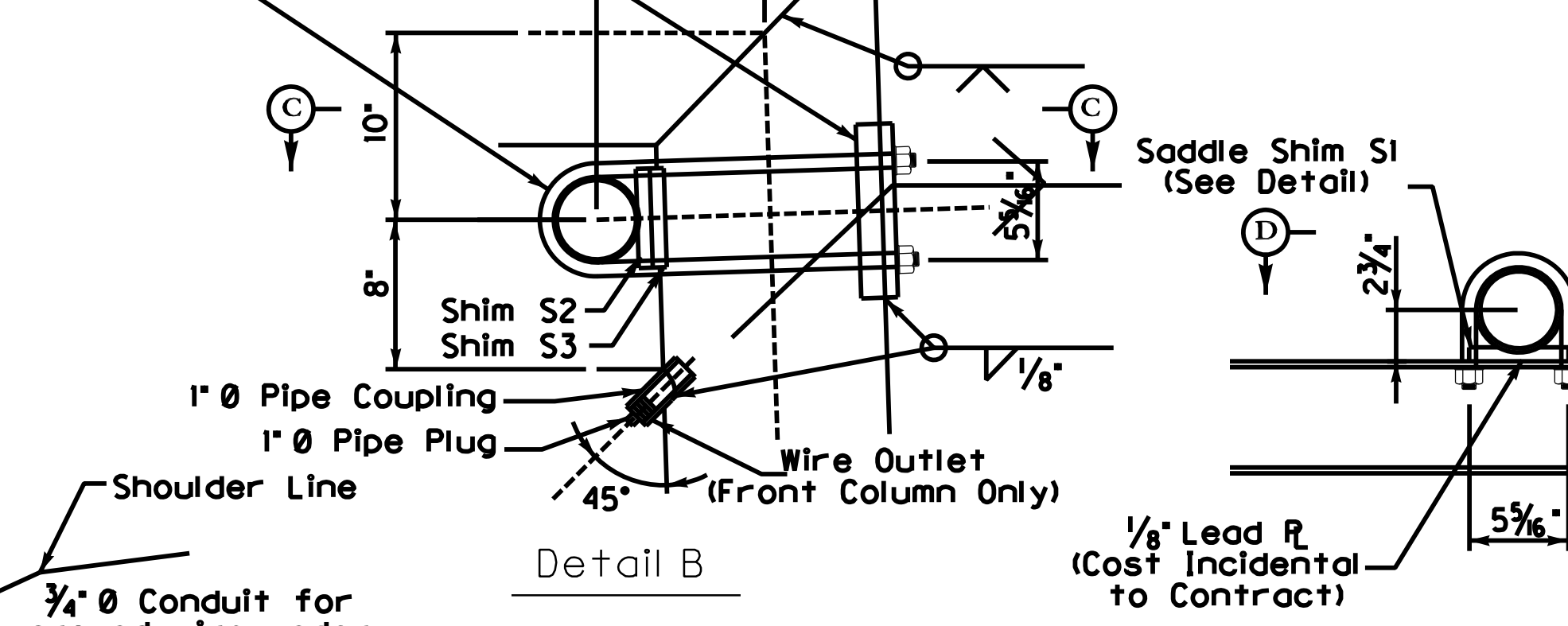
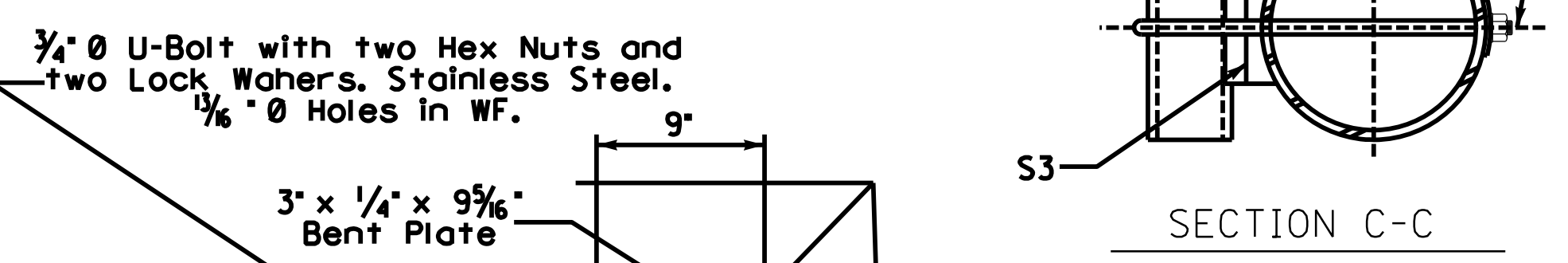
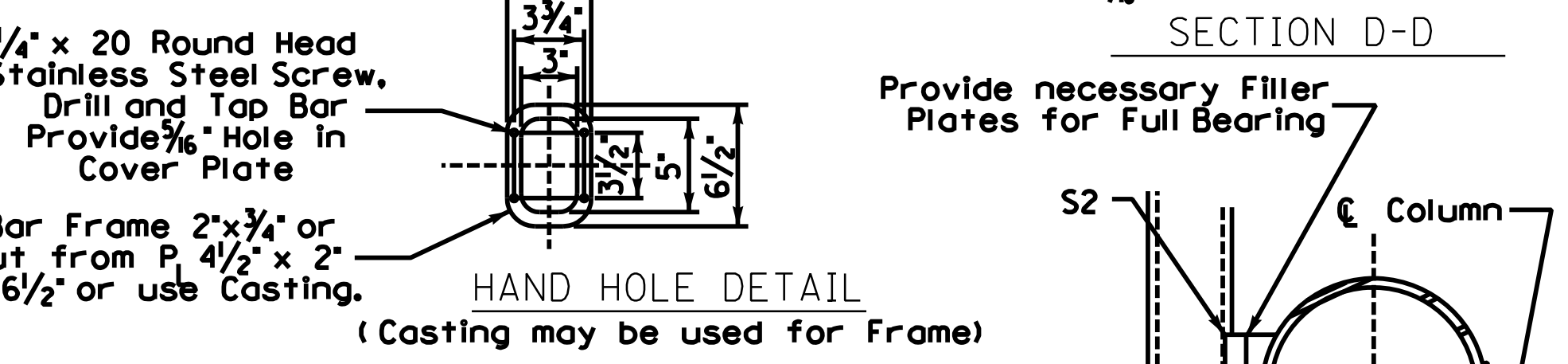
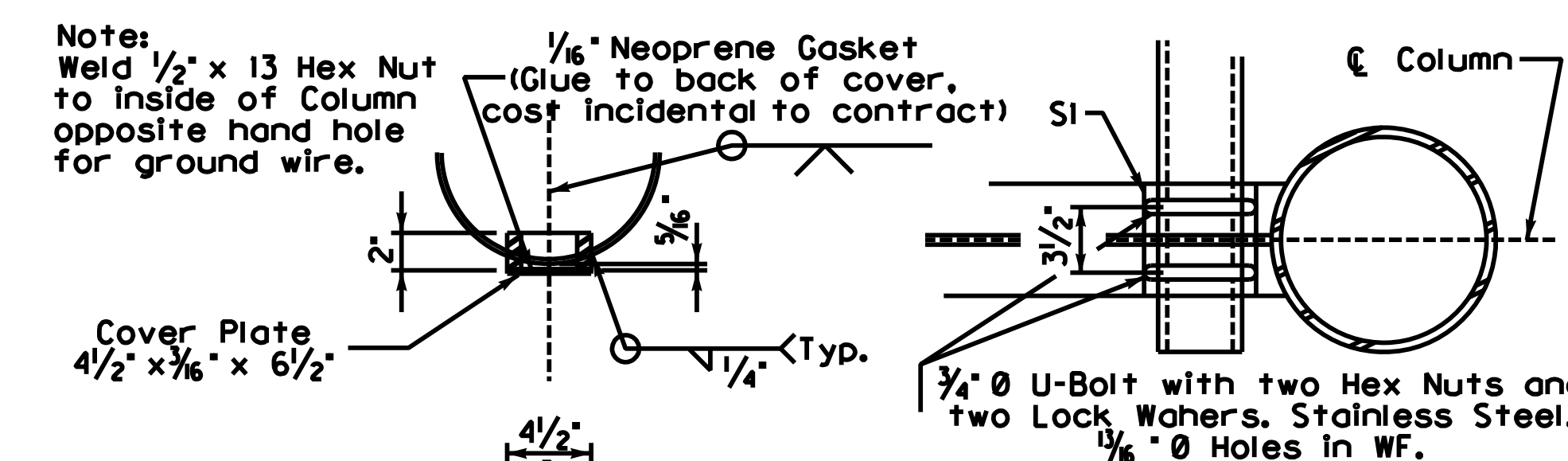
50'-70' OVERHEAD SIGN SUPPORT

PREPARED BY: Division of Structural Design SHEET NO. T058
DRAWING NO. _____

1 REVISED 01-11-2012

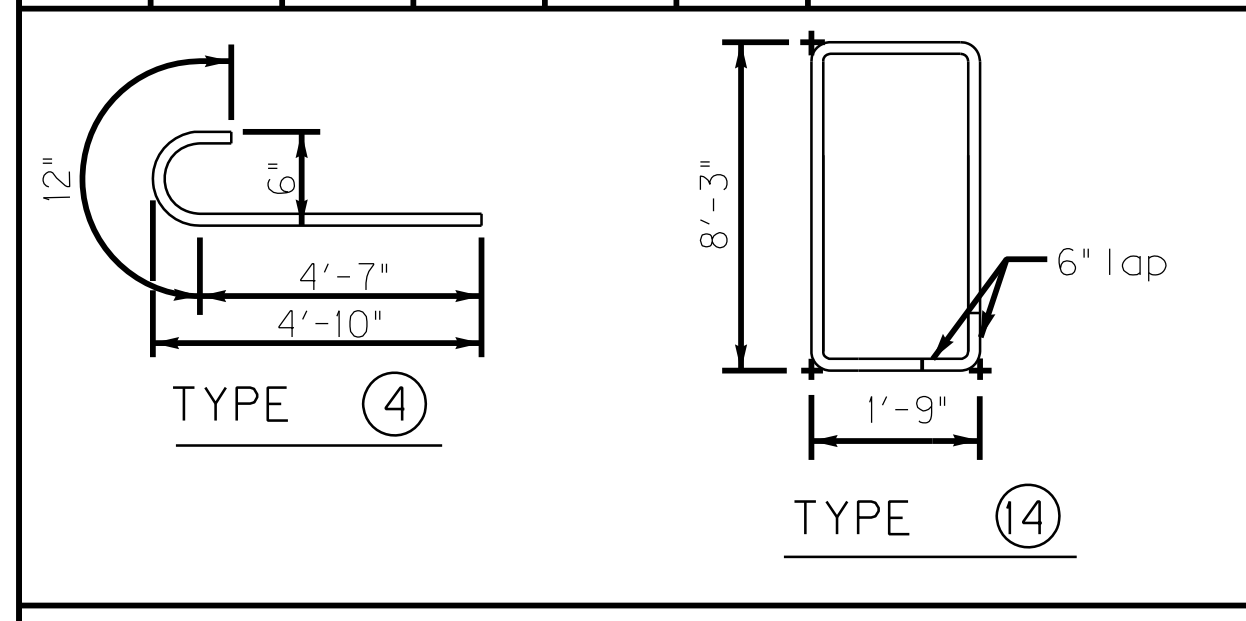


1 MODIFIED NOTE



BILL OF REINFORCEMENT FOR FOOTING

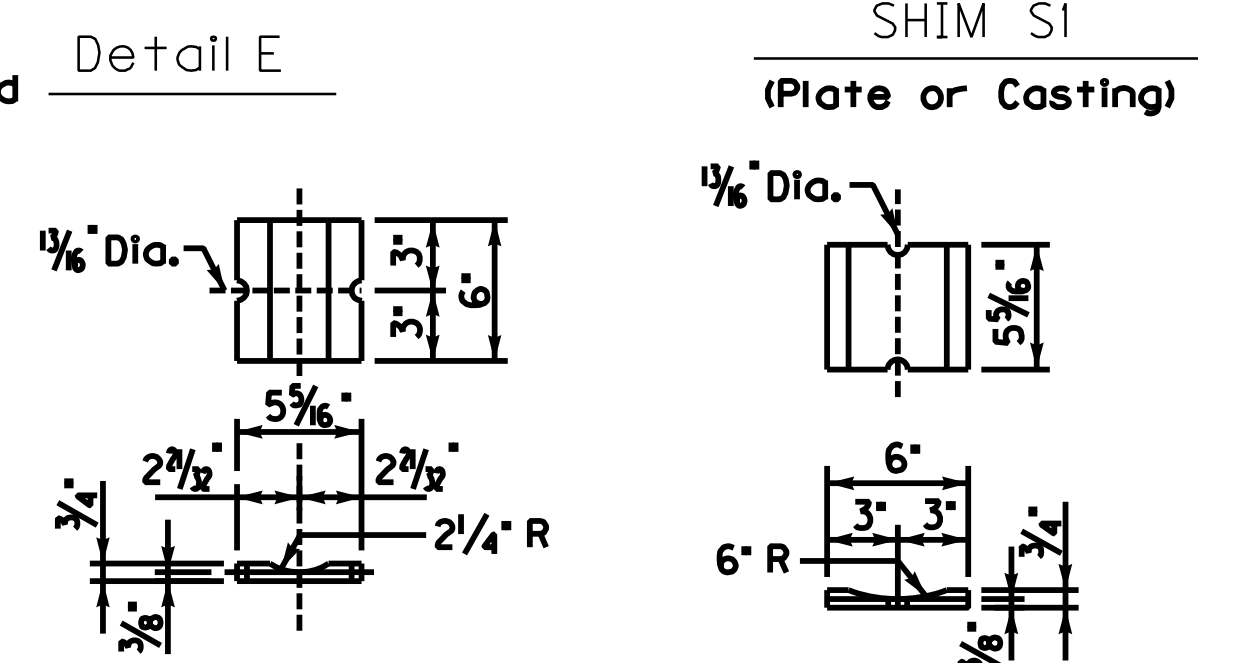
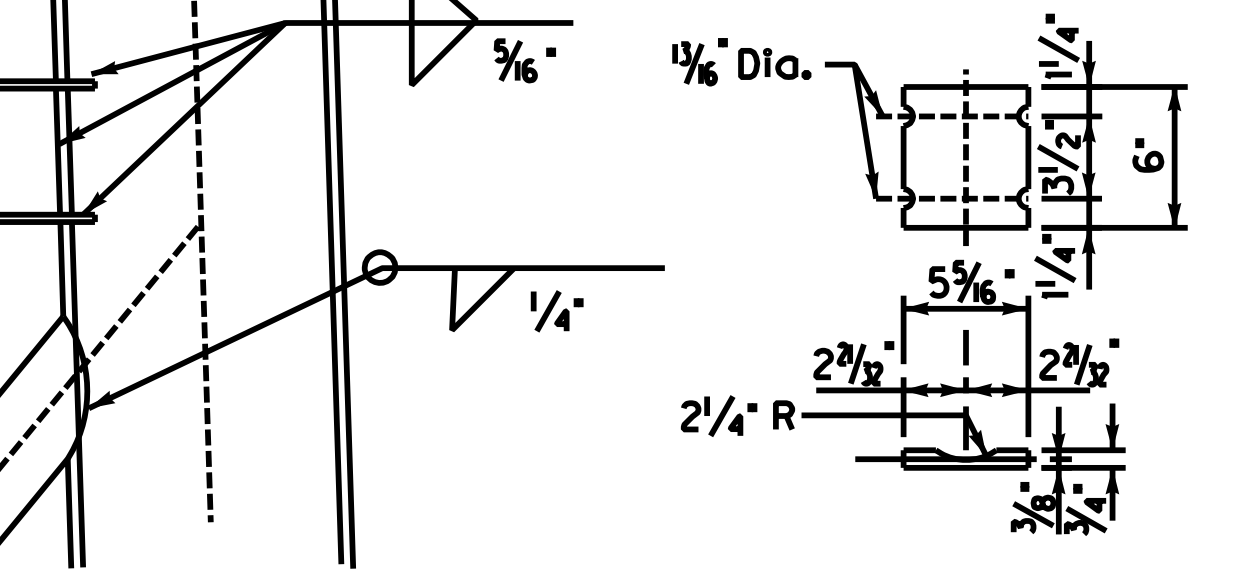
MARK	TYPE	NO.	SIZE	LENGTH		LOCATION
				FT.	IN.	
A1	(4)	20	#6	5	7	Footing & Wall
A2	Str.	34	#5	5	8	" "
A3	Str.	6	#9	16	8	" "
A4	(4)	var.	#4	20	9	Wall
A5	Str.	20	#5	F - (1'-11")		" "
A6	Str.	6	#5	16	8	Footing



* ESTIMATE OF QUANTITIES FOR FOOTING

	Conc. Class "A"	Reinforcement
F=6'-0"	9.3 cy	967 lbs.
1' of additional Pedestal height	0.63 cy	35 lbs.

* Approx. estimate is for information only. Tabulated FL and FR shall be verified by the Engineer in the field.



DATE: Oct, 2010	CHECKED BY:
DESIGNED BY: Standard Sheet E. Kilgore	
DETAILED BY:	
Commonwealth of Kentucky DEPARTMENT OF HIGHWAYS	
COUNTY PIKE	
ROUTE US 460	ITEM NUMBER 12-263.49
50'-70' OVERHEAD SIGN SUPPORT	
PREPARED BY Division of Structural Design	
SHEET NO. T058	
DRAWING NO.	

1/10/2012 Pike County 50-70Truss.dgn

STA. 1+160

NOTE: SIGN TRUSS FOUNDATION DATA (UP TO BASE PLATE) FOR INFORMATION ONLY. SUPERSTRUCTURE TO BE CONSTRUCTED UNDER THIS PROJECT.

CONTRACT ID: 121001
COUNTY: PIKE
PROPOSAL: APD 0806(040)

PAGE: 1
LETTING: 01/27/12
CALL NO: 102

LINE NO	ITEM	DESCRIPTION	APPROXIMATE QUANTITY	UNIT	UNIT PRICE	AMOUNT
SECTION 0001 ROADWAY						
0010	00003	CRUSHED STONE BASE	123,304.000	TON		
0020	00020	TRAFFIC BOUND BASE	105.120	TON		
0030	00100	ASPHALT SEAL AGGREGATE	731.800	TON		
0040	00205	CL3 ASPH BASE 1.50D PG64-22	8,673.000	TON		
0050	00208	CL4 ASPH BASE 1.50D PG64-22	22,406.000	TON		
0060	00212	CL2 ASPH BASE 1.00D PG64-22	43,323.000	TON		
0070	00214	CL3 ASPH BASE 1.00D PG64-22	62,786.000	TON		
0080	00219	CL4 ASPH BASE 1.00D PG76-22	7,145.000	TON		
0090	00221	CL2 ASPH BASE 0.75D PG64-22	5,448.000	TON		
0100	00291	EMULSIFIED ASPHALT RS-2	88.300	TON		
0110	00301	CL2 ASPH SURF 0.38D PG64-22	5,771.100	TON		
0120	00337	CL4 ASPH SURF 0.38B PG76-22	3,781.000	TON		
0130	00339	CL3 ASPH SURF 0.38D PG64-22	1,164.000	TON		
0140	00395	CL3 SMA BASE 1.00D PG76-22	21,843.000	TON		
0150	00397	CL3 SMA SURF 0.38A PG76-22	9,038.000	TON		
0160	01891	ISLAND HEADER CURB TYPE 2	424.800	LF		
0170	01982	DELINEATOR FOR GUARDRAIL-WHITE	12.000	EACH		
0180	01983	DELINEATOR FOR GUARDRAIL-YELLOW	21.000	EACH		
0190	01985	DELINEATOR FOR BARRIER WALL-MONO DIRECTIONAL YELLOW	000	EACH		
0200	02014	BARRICADE-TYPE III	22.000	EACH		

CONTRACT ID: 121001
COUNTY: PIKE
PROPOSAL: APD 0806(040)

PAGE: 2
LETTING: 01/27/12
CALL NO: 102

LINE NO	ITEM	DESCRIPTION	APPROXIMATE QUANTITY	UNIT	UNIT PRICE	AMOUNT
0210	02242	WATER	3,315.000	MGAL		
0220	02351	GUARDRAIL-STEEL W BEAM-S FACE	20,715.000	LF		
0230	02352	GUARDRAIL-STEEL W BEAM-D FACE	878.770	LF		
0240	02360	GUARDRAIL TERMINAL SECTION NO 1	8.000	EACH		
0250	02363	GUARDRAIL CONNECTOR TO BRIDGE END TY A	18.000	EACH		
0260	02365	CRASH CUSHION TYPE IX-A	6.000	EACH		
0270	02367	GUARDRAIL END TREATMENT TYPE 1	40.000	EACH		
0280	02369	GUARDRAIL END TREATMENT TYPE 2A	25.000	EACH		
0290	02371	GUARDRAIL END TREATMENT TYPE 7	1.000	EACH		
0300	02387	GUARDRAIL CONNECTOR TO BRIDGE END TY A-1	3.000	EACH		
0310	02483	CHANNEL LINING CLASS II	6,270.000	TON		
0320	02483	CHANNEL LINING CLASS II FOR DROP BOX INLETS	158.000	TON		
0330	02562	SIGNS	56.000	SQFT		
0340	02601	FINAL DRESSING CLASS B	22,696.460	LF		
0350	02650	MAINTAIN & CONTROL TRAFFIC	(1.00)	LS		
0360	02726	STAKING	(1.00)	LS		
0370	02929	CRASH CUSHION TYPE IX	4.000	EACH		
0380	03171	CONCRETE BARRIER WALL TYPE 9T	3,700.000	LF		
0390	05966	TOPDRESSING FERTILIZER	0.600	TON		
0400	05985	SEEDING AND PROTECTION	9,680.000	SQYD		
0410	06515	PAVE STRIPING-PERM PAINT-6 IN	216,285.530	LF		

CONTRACT ID: 121001
COUNTY: PIKE
PROPOSAL: APD 0806(040)

PAGE: 3
LETTING: 01/27/12
CALL NO: 102

LINE NO	ITEM	DESCRIPTION	APPROXIMATE QUANTITY	UNIT	UNIT PRICE	AMOUNT
0420	06517	PAVE STRIPING-PERM PAINT-12 IN	1,645.180	LF		
0430	06568	PAVE MARKING-THERMO STOP BAR-24IN	175.920	LF		
0440	06569	PAVE MARKING-THERMO CROSS-HATCH	3,320.000	SQFT		
0450	06572	PAVE MARKING-DOTTED LANE EXTEN	7,858.850	LF		
0460	06574	PAVE MARKING-THERMO CURV ARROW	17.000	EACH		
0470	06578	PAVE MARKING-THERMO MERGE ARROW	3.000	EACH		
0480	06589	PAVEMENT MARKER TYPE V-MW	88.000	EACH		
0490	08100	CONCRETE-CLASS A	15.840	CUYD		
0500	08150	STEEL REINFORCEMENT	784.000	LB		
0510	08903	CRASH CUSHION TY VI CLASS BT TL3	3.000	EACH		
0520	10020NS	FUEL ADJUSTMENT	301,119.000	DOLL	1.00	301,119.00
0530	10030NS	ASPHALT ADJUSTMENT	461,517.000	DOLL	1.00	461,517.00
0540	20550ND	SAWCUT PAVEMENT	648.140	LF		
0550	20569ES710	DROP BOX INLET TY 13G(MOD)	22.000	EACH		
0560	20570ES710	DROP BOX INLET TY 13S(MOD)	1.000	EACH		
0570	21173EC	SAW-CLEAN-RESEAL RANDOM CRACKS	500.000	LF		
0580	23877EC	CONC MEDIAN BARRIER WALL TY 14C	5,920.420	LF		
SECTION 0002 SIGNING						
0590	04904	BARRIER MOUNTING BRACKET	6.000	EACH		
0600	06400	GMSS GALV STEEL TYPE A	22,407.000	LB		
0610	06405	SBM ALUMINUM PANEL SIGNS	4,516.100	SQFT		

CONTRACT ID: 121001
COUNTY: PIKE
PROPOSAL: APD 0806(040)

PAGE: 4
LETTING: 01/27/12
CALL NO: 102

LINE NO	ITEM	DESCRIPTION	APPROXIMATE QUANTITY	UNIT	UNIT PRICE	AMOUNT
0620	06406	SBM ALUM SHEET SIGNS .080 IN	1,273.300	SQFT		
0630	06407	SBM ALUM SHEET SIGNS .125 IN	1,016.500	SQFT		
0640	06410	STEEL POST TYPE 1	1,457.000	LF		
0650	06411	STEEL POST TYPE 2	4,495.000	LF		
0660	06417	FLEXIBLE DELINEATOR POST-W	908.000	EACH		
0670	06418	FLEXIBLE DELINEATOR POST-Y	729.000	EACH		
0671	06422	OSS ALUMINUM 60 FT TRUSS (ADDED: 1-17-12)	2.000	EACH		
0680	06426	OSS ALUMINUM 70 FT TRUSS (REVISED: 1-17-12)	1.000	EACH		
0690	06441	GMSS GALV STEEL TYPE C	8,619.000	LB		
0700	06490	CLASS A CONCRETE FOR SIGNS	133.100	CUYD		
0710	06491	STEEL REINFORCEMENT FOR SIGNS	5,911.000	LB		
0720	20419ND	ROADWAY CROSS SECTION	23.000	EACH		
0730	20912ND	BARRIER WALL POST	6.000	EACH		
0740	21596ND	GMSS TYPE D	19.000	EACH		
SECTION 0003 LIGHTING						
0750	04701	POLE 40 FT MTG HT	3.000	EACH		
0760	04714	POLE 120 FT MTG HT HIGH MAST	5.000	EACH		
0770	04722	BRACKET 8 FT	2.000	EACH		
0780	04725	BRACKET 15 FT	1.000	EACH		
0790	04740	POLE BASE	3.000	EACH		
0800	04750	TRANSFORMER BASE	3.000	EACH		

CONTRACT ID: 121001
COUNTY: PIKE
PROPOSAL: APD 0806(040)

PAGE: 5
LETTING: 01/27/12
CALL NO: 102

LINE NO	ITEM	DESCRIPTION	APPROXIMATE QUANTITY	UNIT	UNIT PRICE	AMOUNT
0810	04760	POLE W/SECONDARY CONTROL EQUIP	4.000	EACH		
0820	04770	HPS LUMINAIRE	3.000	EACH		
0830	04773	HPS LUMINAIRE HIGH MAST	24.000	EACH		
0840	04780	FUSED CONNECTOR KIT	6.000	EACH		
0850	04793	CONDUIT-1 1/4 IN	450.000	LF		
0860	04797	CONDUIT-3 IN	1,590.000	LF		
0870	04820	TRENCHING AND BACKFILLING	1,870.000	LF		
0880	04832	WIRE-NO. 12	471.000	LF		
0890	04833	WIRE-NO. 8	6,690.000	LF		
0900	20391NS835	JUNCTION BOX TYPE A	5.000	EACH		
0910	21543EN	BORE AND JACK CONDUIT	170.000	LF		
0920	23161EN	POLE BASE-HIGH MAST	46.520	CUYD		
SECTION 0004 MOB AND DEMOB						
0930	02568	MOBILIZATION (NO MORE THAN 5%)		LUMP		
0940	02569	DEMOBILIZATION (AT LEAST 1.5%)		LUMP		
		TOTAL BID				